

Northern Territory Correctional Services Annual Statistics

2016 – 2017



Northern Territory Government

Northern Territory Correctional Services Annual Statistics

2016 - 2017

© Northern Territory of Australia, Department of the Attorney-General and Justice,
2018

All rights reserved.

Whilst all reasonable care has been taken in the preparation of this report, the Northern Territory of Australia, its employees and agents do not warrant or represent that the report is free from errors or omission, or that it is exhaustive. No liability is assumed for any errors or omissions.

Produced by:

Criminal Justice Research and Statistics Unit

Northern Territory Government

GPO Box 1722

DARWIN NT 0801

Telephone: (08) 8935 7446

Website: <https://justice.nt.gov.au/attorney-general-and-justice/statistics-and-strategy>

CONTENTS

Annual Statistics.....	1
Introduction	1
Caseload Overview.....	3
Adult Prisoners.....	4
Population	4
Receptions	4
Imprisonment Rates	4
Aboriginal Status	5
Sentenced Prisoners.....	6
Offence	6
Last Known Address	6
Age.....	7
Sex.....	7
Marital Status	7
Foreign National Prisoners.....	8
Adult Foreign National Prisoners.....	8
Community Corrections orders.....	10
Caseload.....	10
Commencements	10
Aboriginal Status.....	10
Age.....	10
Sex.....	10
PERFORMANCE	11
SUPPORTING TABLES.....	14
Census of Adult Prisoners as at 30 June 2017	14
Adult Prisoner Turnover During 2016-17.....	20
Adult Prisoners During 2016-17	22
Community Corrections Caseload as at 30 June 2017	32
Community Corrections Turnover During 2016-17.....	34
APPENDIX 1	36
Offence Classifications.....	36

T A B L E S

Table 1 Summary of adult prisoner numbers in 2016-17 by correctional institution.	4
Table 2 Summary of estimated daily average foreign prisoners and detainees from 1996-97 to 2016-17*.	8
Table 3 National Performance Indicators.	12
Table 4 Census of prisoners by correctional institution, sentence status, Aboriginal status and gender.	14
Table 5 Census of prisoners by correctional institution and employment status at time of reception.	15
Table 6 Census of prisoners by correctional institution and age.	15
Table 7 Census of prisoners by correctional institution and marital status.	15
Table 8 Census of sentenced prisoners by correctional institution and aggregate sentence.	16
Table 9 Census of prisoners by correctional institution, last known address and Aboriginal status.	17
Table 10 Census of prisoners by offence and sentence status.	18
Table 11 Census of prisoners by correctional institution, Aboriginal status and type of sentence.	19
Table 12 Adult turnover summary.	20
Table 13 Adult escapes (incidents and persons).	20
Table 14 Adult receptions by sentence status, Aboriginal status and sex.	21
Table 15 Adult monthly daily average by correctional institution and sentence status.	22
Table 16 Adult releases by correctional institution, release reason and Aboriginal status.	24
Table 17 Distinct adults received by correctional institution, age, sex and Aboriginal status.	25
Table 18 Distinct adults received by correctional institution, place of origin and Aboriginal status.	26
Table 19 Summary of adult sentenced episode commencements by aggregate sentence and offence, 2016-17	27
Table 20 Adult sentenced episode commencements by aggregate sentence, Aboriginal status and offence, 2016-177 2016-177	28
Table 21 Adult sentenced episodes held by aggregate sentence, offence and Aboriginal status, 2016-17	29
Table 22 Adult sentenced episodes commenced by aggregate sentence, offence and gender, 2016-17	30
Table 23 Community Corrections adult caseload by office, Aboriginal status and order.	32
Table 24 Community Corrections youth caseload by office, Aboriginal status and order.	33
Table 25 Community corrections order completions.	34
Table 26 Community corrections order commencements by Aboriginal status and gender.	35
Table 27 Distinct persons commencing a community corrections order by Aboriginal status and gender.	35

FIGURES

Figure 1 Northern Territory correctional services distinct client caseload	3
Figure 2 Yearly daily average adult prisoners from 1996-97 to 2016-17.....	4
Figure 3 Estimated adult imprisonment rates by jurisdiction, 2016-17.	5
Figure 4 Estimated adult Aboriginal imprisonment rates by jurisdiction, 2016-17.	6
Figure 5 Estimated adult female imprisonment rates, 2011-12 to 2016-17.	7
Figure 6 Distribution of selected 'most serious offences' for foreign national prisoners and all adult prisoners	9
Figure 7 Community Corrections caseload (adult and youth)	10
Figure 8 Northern Territory Adult Prisoners as at 30 June 2017	14
Figure 9 Adult Monthly Daily Averages 2016-17 and 2015-16.	23
Figure 10 Monthly daily average of sentenced and unsentenced adults, 2016-17.....	23
Figure 11 Distribution of aggregate sentence commencements for adults according to selected offences and age* group, 2016-17.....	31
Figure 12 Northern Territory Community Corrections Caseload as at 30 June 2017.....	34

ANNUAL STATISTICS

INTRODUCTION

Prior to the August 2016 Northern Territory general election, the Northern Territory Department of Correctional Services (NTDCS) supervised both adults and youth who were subject to imprisonment/detention or community corrections orders. Following the election, adult correctional services became a part of the Department of the Attorney-General and Justice, and youth justice services became part of Territory Families. As youth in community corrections continued under the supervision of the Department of Attorney-General and Justice through 2016-17, they have been included in this report. Youth detention statistics have been reported separately via Territory Families.

Persons in custody are located at:

Adults -

- Alice Springs Correctional Centre;
- Darwin Correctional Centre;
- Datjala Work Camp (Nhulunbuy); and
- Barkly Work Camp.

The non-custodial orders are administered by officers located in eight offices throughout the Northern Territory (NT):

- Palmerston and Top End Region (Jabiru, Maningrida, Oenpelli, Tiwi Islands);
- Casuarina;
- Alice Springs;
- Katherine;
- Tennant Creek;
- Groote Eylandt (Alyangula);
- Wadeye (Port Keats); and
- Nhulunbuy.

This report presents detailed statistics on adults and youths supervised by NTDCS during 2016-17. Data from 2015-16 are supplied for comparison purposes as well as some long term data to show trends.

Statistics in this report include demographic characteristics of prisoners and community corrections clients, receptions, sentence status, offence types, last known address, caseload, community corrections client turn over, imprisonment rates and sentence durations.

The majority of the data are extracted from the Integrated Offender Management System (IOMS). Some internal data compiled by corrections staff are also used (eg escape information, daily averages).

National rates of imprisonment compiled by the Australian Bureau of Statistics (ABS) are provided for comparison with Northern Territory rates.

Selected characteristics in relation to the NT and other jurisdictions for 2016-17 from the 'Report on Government Services' are presented in this report.

Care should be taken when comparing information from this with other publications (eg ABS publications, Department of Correctional Services Annual Report and Report on Government Services), as different data collection timeframes, data extractions dates, different data sources or different counting methods may have been used.

The tables provided in this publication relating to the census of prisoners held on 30 June 2017 only include prisoners held in Northern Territory correctional centres. It does not include five prisoners who were held in Police Prisons on the night of 30 June 2017. These police prisoners are included in the ABS publication "Prisoners in Australia" therefore some differences may occur between figures in this report and figures published by the ABS.

The basis for reporting on offences is the Most Serious Offence (MSO) for the episode as recorded in IOMS. To enable national comparability, reporting on offences is in accordance with the Australian and New Zealand Standard Offence Classification (ANZSOC) divisions and selected subdivisions. Offence table abbreviations and classifications can be found in Appendix 1.

The totals in some tables (eg daily averages) may differ to the sum of the components due to rounding of the values of the components.

This comprehensive set of statistics is primarily used by corrections and youth justice staff for tactical and strategic planning relating to correctional services and youth justice services in the Northern Territory. Researchers and practitioners from other jurisdictions may also find this publication informative.

This report was compiled by the Criminal Justice Research and Statistics Unit, Northern Territory Government, and is available via the website:

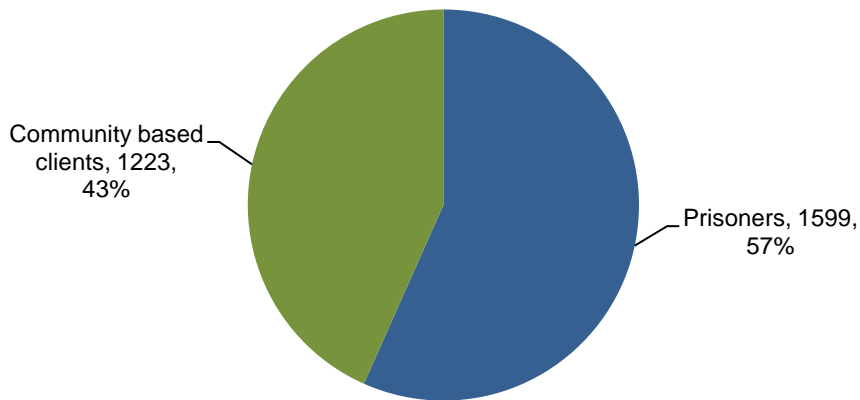
<https://justice.nt.gov.au/attorney-general-and-justice/statistics-and-strategy/criminal-justice-statistics>

Further information relating to youth detention is available from Territory Families.

CASELOAD OVERVIEW

On 30 June 2017, the Northern Territory correctional services caseload consisted of 2,822 distinct persons, either adults or youth undertaking a community corrections order or adults in custody in a correctional centre. This is estimated as 1,353 per 100,000¹ persons in the Northern Territory. Note that as youth detainees are not included in this figure, it is not comparable with caseload rates published in previous years.

Figure 1 Northern Territory correctional services distinct client caseload as at 30 June 2017.



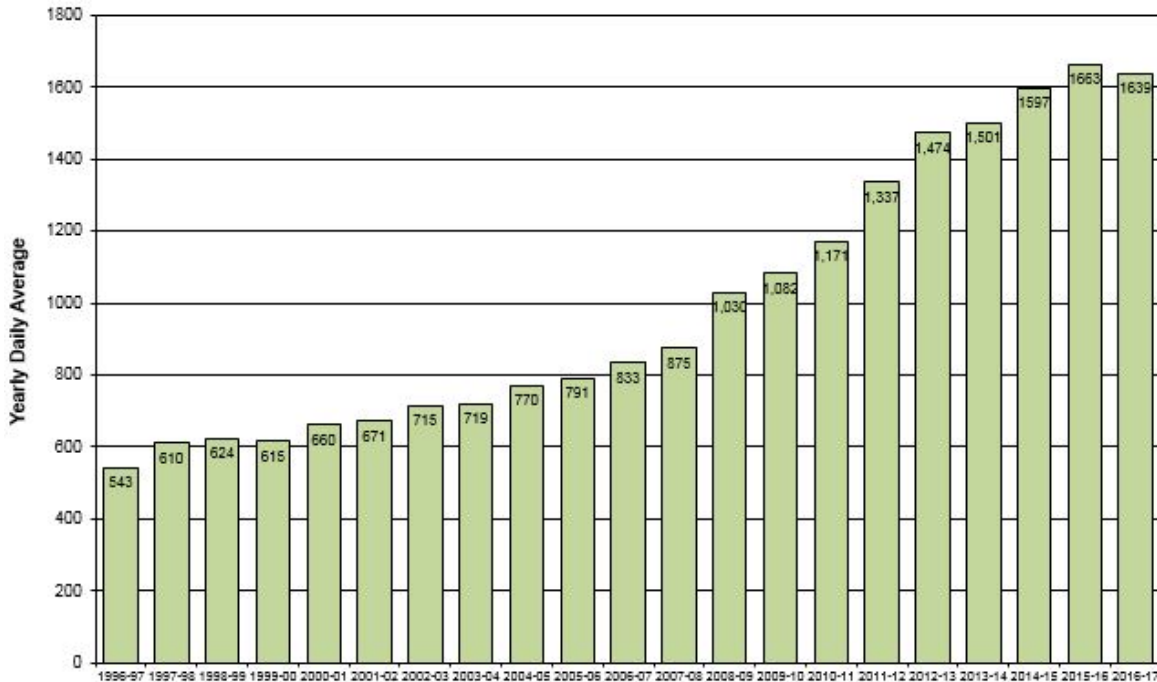
¹ Derived from the Australian Bureau of Statistics publication (3101.0) – Australian Demographic Statistics, June 2017.

ADULT PRISONERS

Population

The daily average number of prisoners held in adult correctional institutions in the Northern Territory in 2016-17 was 1,639, which was 1% less than the previous year (1,663). The following figure shows that prison population has only experienced a year-on-year reduction twice during the twenty year period and in general has steadily been increasing over the past 20 years..

Figure 2 Yearly daily average adult prisoners from 1996-97 to 2016-17.



The minimum and maximum number of prisoners that were held in custody in an adult correctional institution in the Northern Territory on any day during 2016-17 was 1,565 and 1,725 respectively. The average occupancy level of the combined correctional institutions was 99% during the year.

Table 1 Summary of adult prisoner numbers in 2016-17 by correctional institution.

Correctional Institution	Minimum	Maximum	Daily Average	Design Capacity	Average Occupancy Level
Alice Springs Correctional Centre	510	588	556.1	500	111%
Darwin Correctional Centre	905	1045	978.9	1048	93%
Barkly Work Camp	54	77	69.7	50	139%
Datjala Work Camp	29	41	34.5	50	69%
All Centres	1565	1725	1639	1648	99%

Receptions

There were 4,235 receptions into Northern Territory adult correctional institutions during 2016-17, a decrease of 1% from the previous year. These receptions involved 3,246 distinct persons.

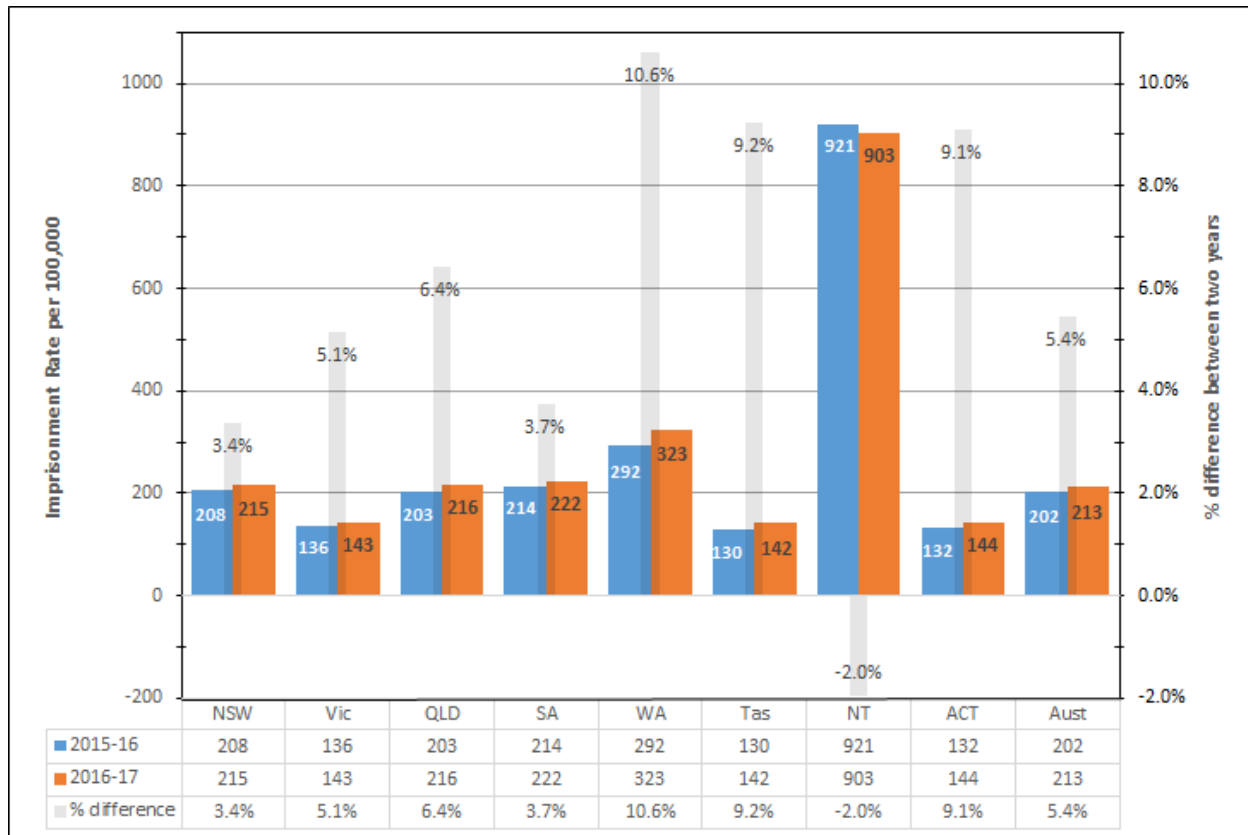
Imprisonment Rates

The rate of imprisonment² of adults in the Northern Territory for 2016-17 is estimated to be 903 per 100,000 adults, which continues to be significantly higher than in other jurisdictions (see Figure 3 below). The Northern Territory however, was the only jurisdiction to experience a reduction in the imprisonment rate

² Derived from the Australian Bureau of Statistics publication (4512.0) – Corrective Services Australia, June quarter 2017.

(2.0%) in 2016-17 compared with the previous year. The national rate of imprisonment is estimated at 213 per 100,000 adults.

Figure 3 Estimated adult imprisonment rates by jurisdiction, 2016-17.



Estimates of imprisonment rate per 100,000 adult population based on ABS Corrective Services Australia (4512.0).

Aboriginal Status

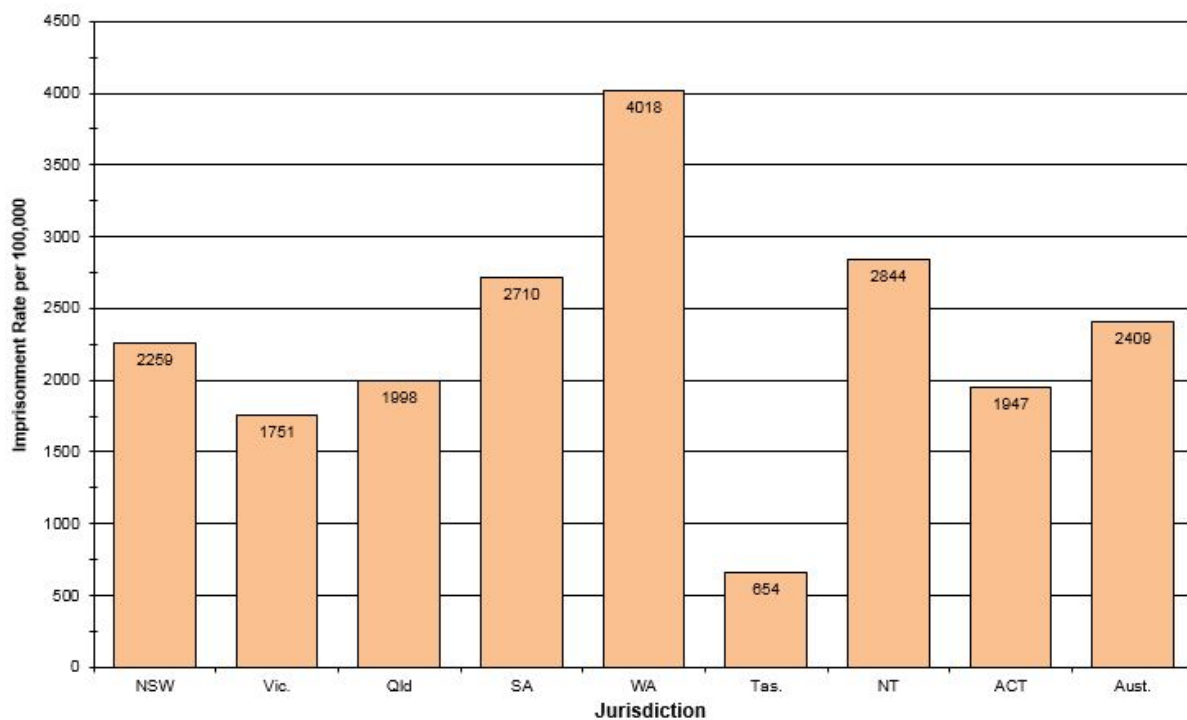
The daily average number of Aboriginal prisoners in custody during 2016-17 was 1,376, which represented 84% of the total daily average.

On 30 June 2017, there were 1,343 Aboriginal prisoners in custody in an adult correctional institution in the Northern Territory, which represented 84% of total prisoners.

The figure below shows that the 2016-17 estimated rate of imprisonment of Aboriginal adults in the Northern Territory was 2,844 persons per 100,000 Aboriginal adults, which is 18% more than the national average of 2,409 persons per 100,000 Aboriginal adults. Although the NT had the highest overall imprisonment rate (Figure 3), this is due to the difference in population structure between the NT and other jurisdictions. The NT did not have the highest rate of Aboriginal imprisonment, being 29% less than the rate in Western Australia (Figure 4).

The estimated 2016-17 Northern Territory non-Aboriginal rate of imprisonment was 198 per 100,000 non-Aboriginal adults, compared with the national rate of 158 per 100,000³. Again, the NT's non-Aboriginal imprisonment rate is less than that of Western Australia, based on the prisoner census of 30 June 2017.

³ The NT and national non-Aboriginal adult population estimates for 2016-17 were derived from rates used in ABS (4512.0) Corrective Services Australia – June Quarter 2017.

Figure 4 Estimated adult Aboriginal imprisonment rates by jurisdiction, 2016-17.

Estimates of imprisonment rate per 100,000 adult Aboriginal population based on ABS Corrective Services Australia (4512.0).

Sentenced Prisoners

On 30 June 2017, sentenced prisoners represented 71% of those in custody. Of these, 38% had an aggregate sentence of less than 12 months.

During 2016-17, sentenced prisoners represented 62% of the receptions and 71% of the daily average number of prisoners in adult correctional institutions.

The average aggregate sentence length for prisoners sentenced to imprisonment during 2016-17 (excluding prisoners with life sentences) was 262 days, which is 22 days less than for the previous year (284 days). The median sentence length for these prisoners was 122 days in 2016-17, which is 12 days less than the median length for 2015-16. The average sentence length for Aboriginal prisoners sentenced to imprisonment in 2016-17 was 237 days.

The most common offence type for sentenced episode commencements was 'Acts intended to cause injury' which represented 42% of the commencements. The average aggregate sentence length was 273 days (which is slightly more than the previous year's average of 267 days). 'Murder' and 'Attempted murder' overall received the longest aggregate sentences of life and more than 16 years, respectively.

The average aggregate sentence length for all sentenced prisoners held in custody during 2016-17 (excluding prisoners with life sentences) was 507 days and the median sentence length was 180 days, which is the same as it was for the previous year.

Offence

The most common offences⁴ for prisoners held in custody on 30 June 2017 were 'Acts intended to cause injury' (47% of prisoners), followed by 'Sexual assault and related offences' (11% of prisoners) and 'Offences against justice procedures, government security and operations' (9% of prisoners).

Last Known Address

Alice Springs Police District was the most common location of last known address for prisoners held in custody on 30 June 2017, representing 18% (284) of prisoners in custody. This was followed by Casuarina Police District 8% (130), Palmerston Police District 8% (129) and Darwin Police District 7% (109).

⁴ The most serious offence for the custody episode as recorded in IOMS.

Age

The average age of distinct prisoners received into custody during 2016-17 was 33 years. There were 41 distinct prisoners received into custody who were aged 60 years or older, with the oldest prisoner aged 80 at reception.

Sex

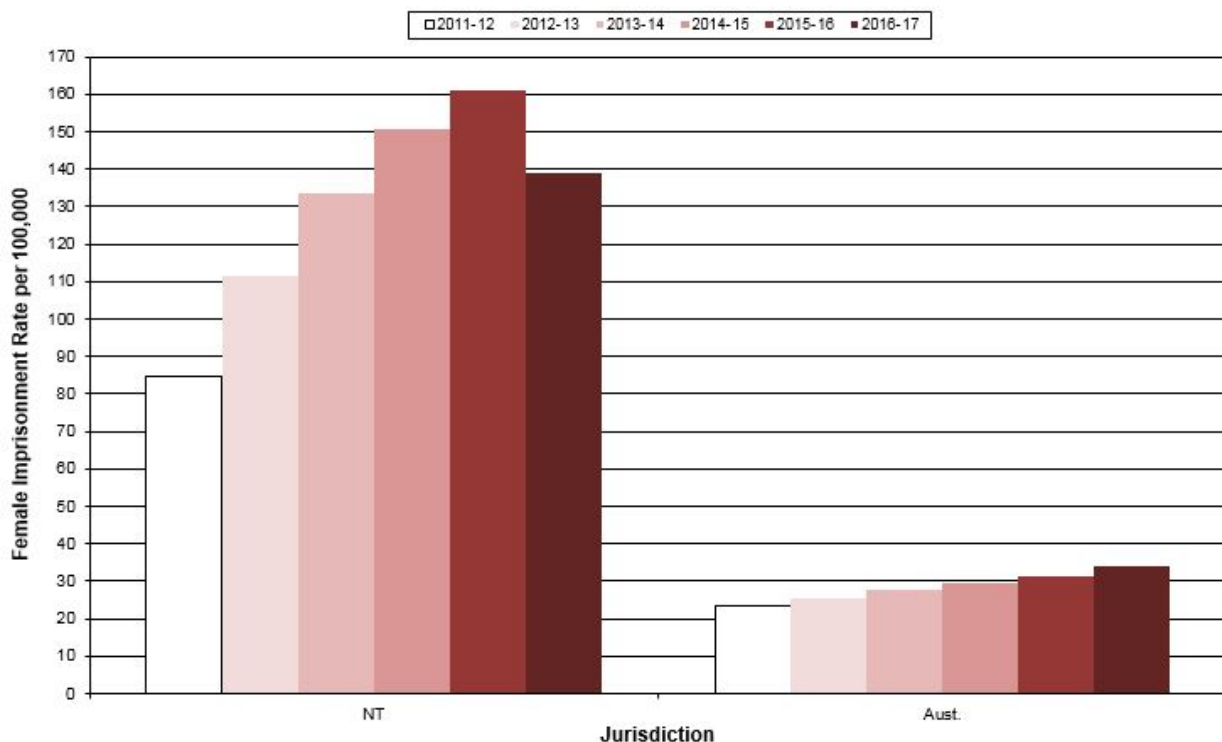
On 30 June 2017, there were 110 female prisoners in custody, which represented 7% of the Northern Territory prison population. During 2016-17, there were 287 sentenced female receptions, a 4% increase compared with the previous year (277).

The daily average number of adult females in custody during 2016-17 was 120, which was 12% lower than the previous year (136). During 2016-17, the average daily proportion of females in the Northern Territory prison population was 7.3% compared to the national average of 8.1% for the same period⁵.

The average aggregate sentence length for adult females commencing a sentence in 2016-17 was 216 days, which is 25 days less than for the previous year.

The estimated Northern Territory female imprisonment rate for 2016-17 was 139 per 100,000 adult females, a decrease of 14% from the previous year. The estimated Australian rate for the same period was 34 per 100,000 adult females. Again, the discrepancy is due to the difference between the NT population structure and that of Australia as a whole. In 2016-17, the NT Aboriginal female imprisonment rate was 16% lower than the overall Australian imprisonment rate for Aboriginal females.

Figure 5 Estimated adult female imprisonment rates, 2011-12 to 2016-17.



Estimates of imprisonment rate per 100,000 adult female population based on ABS Corrective Services Australia (4512.0).

Marital Status

On 30 June 2017, 51% of the prisoners had stated at the time of their reception into custody, that they were married.

⁵ Figures for 2016-17 - Estimates based on ABS Corrective Services Australia – June Quarter 2017.

FOREIGN NATIONAL PRISONERS

Foreign national prisoners are often held in Northern Territory correctional institutions and are included in the counts as non-Aboriginal. The yearly daily average number of foreign national prisoners reached a peak of 145 in 2000-01.

Between 1999-00 and 2002-03, the majority of foreign national prisoners held in Northern Territory correctional institutions were classified as 'people smugglers'. People smugglers are generally non-Australian citizens in custody for federal 'people smuggling' offences⁶. There was a rapid increase in the number of receptions of people smugglers during the 1999-00 financial year. During the period 1999-00 to 2001-02, people smugglers represented a significant proportion of the total custody population and a large proportion of the non-Aboriginal custody population. The yearly daily average number of people smugglers reached a peak of 122 in 2000-01. In 2016-17, the daily average number of people smugglers was zero.

Table 2 Summary of estimated daily average foreign prisoners and detainees from 1996-97 to 2016-17*.

Year/Quarter	Foreign Citizens			Total	% of All Prisoners and Detainees*
	Federal Offence		Non-Federal Offence		
	People Smugglers	Other Federal			
1996-97	3	10	19	32	6%
1997-98	2	11	26	39	6%
1998-99	2	14	25	41	6%
1999-00	71	12	28	112	18%
2000-01	122	12	12	145	21%
2001-02	121	14	6	141	20%
2002-03	40	14	5	59	8%
2003-04	6	12	8	26	3%
2004-05	2	26	8	37	5%
2005-06	1	9	9	18	2%
2006-07	1	14	9	24	3%
2007-08	1	11	8	21	3%
2008-09	1	8	13	22	2%
2009-10	na	na	na	na	na
2010-11	18	7	24	49	4%
2011-12	35	8	21	64	5%
2012-13	28	5	19	52	3%
2013-14	3	8	20	31	2%
2014-15	1	9	27	37	2%
2015-16	0	9	31	40	2%
2016-17	0	8	28	35	2%
Sep. qtr 2016	0	6	29	35	2%
Dec. qtr 2016	0	6	27	33	2%
Mar. qtr 2017	0	9	30	39	2%
Jun. qtr 2017	0	9	26	35	2%

na – not available.

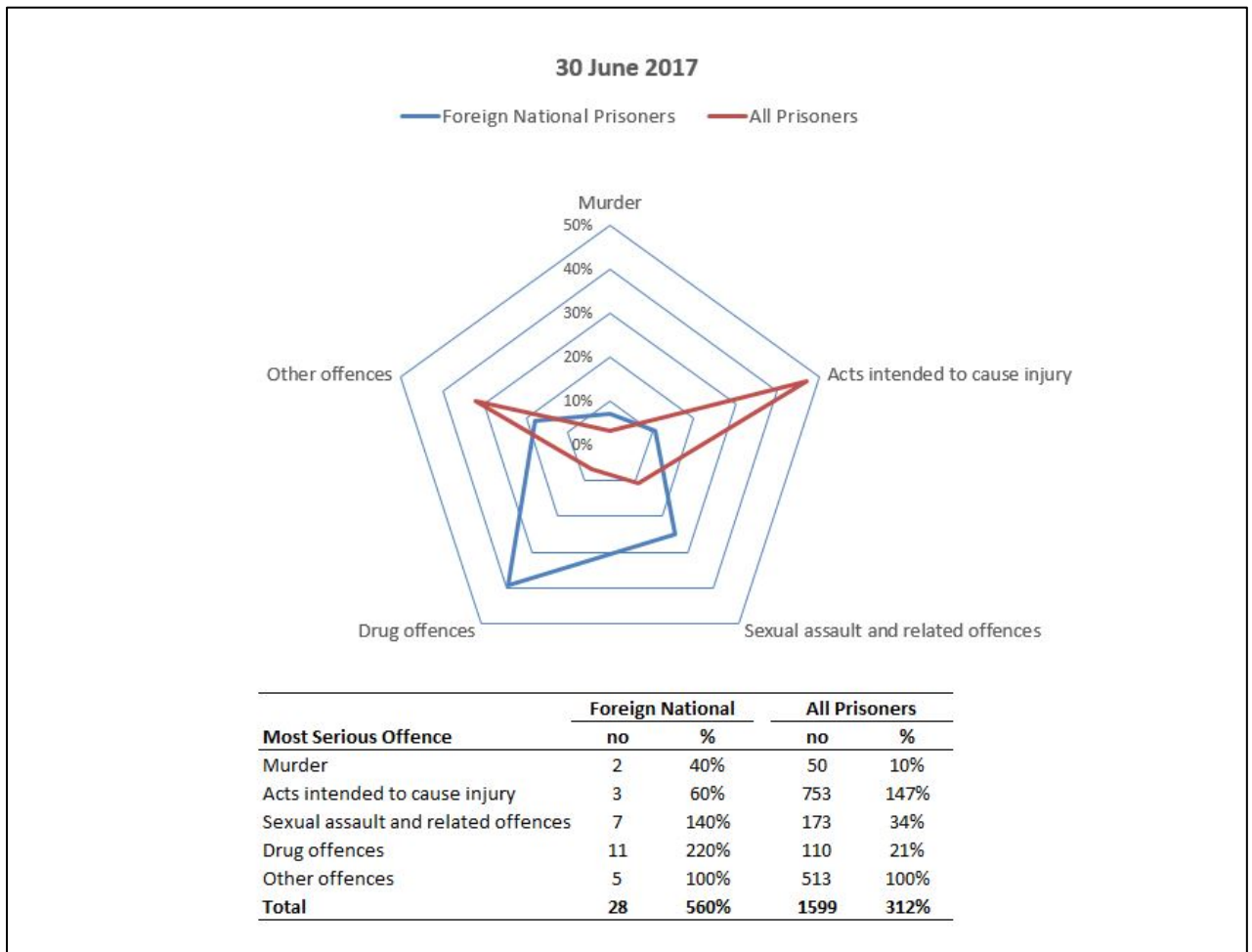
*2016/17 excludes youth detainees.

Adult Foreign National Prisoners

On 30 June 2017, there were 28 foreign nationals in custody in an adult correctional institution, representing 2% of the total adult correctional institution population. Foreign nationals show a very different offending profile compared with the NT prison population as a whole (Figure 6).

⁶ Most serious offence as recorded in IOMS.

Figure 6 Distribution of selected 'most serious offences' for foreign national prisoners and all adult prisoners



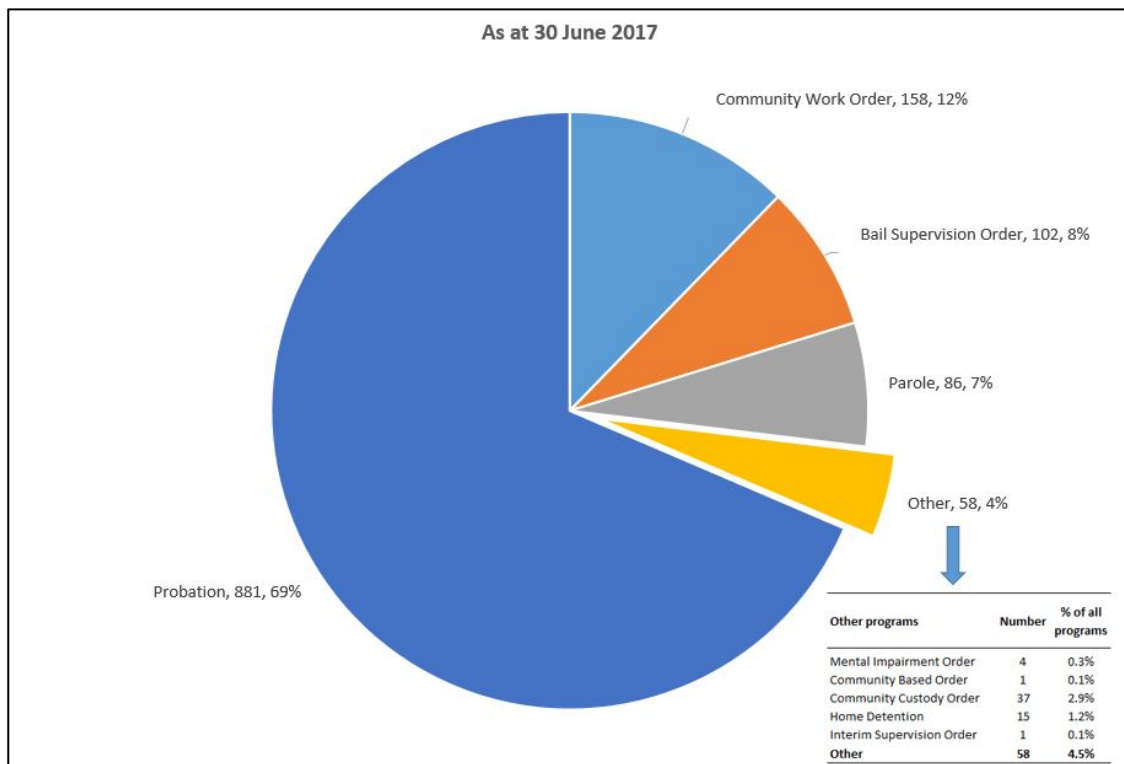
COMMUNITY CORRECTIONS ORDERS

Caseload

As at 30 June 2017, the Community Corrections caseload in the Northern Territory consisted of 1,151 adult orders and 136 youth orders. Of these, 881 (68%) were for probation orders (i.e. an order of release on bond/good behaviour or an order suspending a sentence with a supervision condition) and 158 (12%) were community work orders. An individual may have more than one type of order, including having an adult and a youth order at the same time. Thus the overall caseload on 30 June 2017 relates to 1,219 distinct persons. The adult and youth caseloads relate to 1,114 and 110 distinct persons, respectively.

Commencements

Figure 7 Community Corrections caseload (adult and youth)



During 2016-17, there were 1,886 community corrections order commencements, 1% (12) more than the previous year. Probation orders increased by 6% (71) and community custody orders increased by 30% (24), whilst community work orders decreased by 13% (65) and parole orders decreased by 14% (19). Probation orders were the most common community corrections commencement comprising 63% (1,187).

Aboriginal Status

Aboriginal people represented 85% (1,594) of the community corrections order commencements.

Age

The majority (1,631 or 86%) of community corrections order commencements were for adults. The average and median age for distinct persons who commenced a community corrections order during 2016-17 was 30 years and 28 years respectively. The youngest person to commence an order was 11 years and the oldest was 72 years.

Sex

Females comprised 19% (364) of the community corrections order commencements for 2016-17.

PERFORMANCE

The following table contains information produced by the Steering Committee for the Review of Commonwealth/State Service Provision (SCRCSSP) contained in the 'Report on Government Services, 2018', which compares service delivery performance across jurisdictions in Australia. Each jurisdiction provides standard information by which comparisons can be made. For corrective services, performance is categorised according to efficiency or effectiveness. Key focus areas mentioned above are addressed by at least one indicator and a selection of summary indicators are presented in the following table.

The information presented in the following table for other jurisdictions is for 2016-17. The Agency uses many of the findings from this exercise to establish benchmarks for its own business planning exercises.

In many instances, the Northern Territory differs from other jurisdictions. These unique characteristics include the small general population of which a high proportion is comprised of Aboriginal persons, dispersion of the population and remoteness, which results in higher costs for goods and services, and the physical location of the Northern Territory in comparison to other states.

It should also be noted that some of the indicators used in the following table might differ from those used elsewhere in this Annual Report

As can be seen, the Northern Territory compares reasonably with other jurisdictions in most of the performance indicators mentioned above. The measure of recidivism is seen to be a partial measure of the whole justice system, not just the correctional system. It is recognised that the rates of recidivism are influenced by many factors outside the justice system, including health, education, employment, and other social issues. The measures of recidivism used are limited in that they do not consider the types of re-offending; they only follow a person within the same jurisdiction in which they completed the original corrections program; and they do not include any offences which result in an outcome not administered by correctional services.

Table 3 National Performance Indicators.

Performance Indicators	2016-17									2015-16
	NSW	Vic	Qld	WA	SA	Tas	ACT	NT	Aust.	NT
Justice System - Recidivism rate										
Prisoners returning to prison ¹	51.3	43.6	40.2	37.8	36.2	44.3	38.6	57.1	44.8	58.3
Offenders returning to a Community Corrections order ²	12.3	26.7	16.2	11.6	11.0	18.1	16.3	9.7	15.9	11.1
Prisons										
Descriptive										
Daily average population	12 931	6 853	8 129	6 488	2 998	575	445	1 639	40 059	1 664
Imprisonment rate per 100,000 relevant population ³	215.3	144.6	215.7	321.4	222.5	141.9	144.9	904.3	213.3	921.7
Useable prison capacity	10 518	na	7 258	5 578	na	643	439	1 648	26 084	1 648
Effectiveness										
(containment and supervision)										
Escape rate ⁴ (per 100 prisoners)										
Open	0.26	0.22	1.51	-	-	-	-	1.05	0.38	1.07
Secure	0.04	0.02	-	0.04	-	-	0.46	0.34	0.03	0.22
Death rate by apparent unnatural causes ⁵	0.09	0.04	0.01	0.03	-	-	0.22	0.06	0.05	0.06
Rate of assaults on:										
Prisoners by prisoners										
Serious Assault	0.29	1.88	3.08	0.83	1.50	2.78	3.59	0.18	na	0.06
Assault	27.48	20.88	10.49	4.13	6.87	7.31	15.72	3.29	na	3.31
Officers by Prisoners										
Serious Assault	-	0.03	0.11	0.14	0.17	0.17	-	-	na	-
Assault	1.55	1.63	1.01	1.60	0.63	1.22	1.80	0.37	na	0.06
(offender care) - Out of cell hours	8.0	11.4	10.3	12.3	9.5	8.8	8.9	12.5	10.1	12.1
(reparation) - Proportion of prisoners employed	78.4	87.1	68.8	68.7	68.0	59.0	74.7	78.7	74.7	79.3
(rehabilitation) - Proportion of prisoners in education	24.6	34.1	39.1	24.6	63.4	16.0	70.6	31.0 ⁶	32.9	24.4 ⁶
Efficiency - (resource management)										
% of total utilisation	122.9	na	112.0	116.3	na	89.4	101.5	99.5	115.8	101.0
Costs per prisoner per day ^{7,8} (\$)	172.80	304.12	183.07	236.79	209.80	296.53	297.75	204.55	214.94	198.86
Community Supervision										
Descriptive										
Daily average population ^{9,10}	18 724	14 027	19 780	5 086	6 374	1 826	1 036	1 257	68 110	1 136
Community supervision rate per 100,000 relevant population ³	311.7	296.0	524.9	251.9	473.1	450.7	337.0	693.5	362.7	629.2
Effectiveness										
(containment and supervision) - % of people who successfully completed a community supervision order										
	73.5	62.9	77.0	60.8	72.0	86.4	70.3	71.4	72.2	73.4
Efficiency - (resource management)										
Costs per offender per day ^{7,8} (\$)	21.41	28.98	12.35	38.70	16.52	14.05	32.55	46.92	21.61	48.78
Offender to operational staff ratio	21.3	13.1	42.1	14.9	29.9	25.5	14.8	12.0	21.2	10.6

na – not available

- – nil or rounded to 0

Notes for Table 3:

1. All prisoners released following a period of sentenced imprisonment who return to prison in the same jurisdiction within 2 years of their release.
2. Offenders returning to a community corrections order in the same jurisdiction within 2 years of them successfully completing a community corrections order.
3. Relevant population refers to all persons aged 18 years and over in all states and territories with the exception of Queensland where the adult population is aged 17 years and over.
4. Per 100 prisoners and refers to prisoners, not incidents. Rate is determined by the number of prisoners divided by prisoner daily average (open or secure).
5. Per 100 prisoners and is determined by the number of deaths divided by the prisoner daily average.
6. Figures are based on the number of prisoners in education on a single day, calculated against the number of prisoners in custody on that day (generally based on data from the last day of term prior to 30 June each year).
7. Excludes operating revenues, payroll tax and expenditure on prisoner health and on transport and escort services where able to be disaggregated by jurisdictions.
8. Capital costs not included.
9. Community supervision counts distinct persons not orders and for the Northern Territory, home detention clients are included in this group.
10. Northern Territory figures do not include clients whose order has been in suspense (breach) for three years or more.

SUPPORTING TABLES

CENSUS OF ADULT PRISONERS AS AT 30 JUNE 2017

Table 4 Census of prisoners by correctional institution, sentence status, Aboriginal status and gender.

Correctional institution/ Sentence Status	Aboriginal		Non-Aboriginal		All		Total 2017		Total 2016	
	Male	Female	Male	Female	Male	Female	Number	% of Total	Number	% of Total
Alice Springs Correctional Centre										
Sentenced	322	27	24	1	346	28	374		432	
Unsentenced	123	8	15	3	138	11	149		148	
Total	445	35	39	4	484	39	523	32.7%	580	35.0%
Darwin Correctional Centre										
Sentenced	473	37	140	8	613	45	658		676	
Unsentenced	229	21	57	5	286	26	312		310	
Total	702	58	197	13	899	71	970	60.7%	986	59.5%
Barkly Work Camp										
Sentenced	71	0	0	0	71	0	71		56	
Unsentenced	0	0	0	0	0	0	0		0	
Total	71	0	0	0	71	0	71	4.4%	56	3.4%
Datjala Work Camp										
Sentenced	32	0	3	0	35	0	35		36	
Unsentenced	0	0	0	0	0	0	0		0	
Total	32	0	3	0	35	0	35	2.2%	36	2.2%
Total 30 June 2017										
Sentenced	898	64	167	9	1065	73	1138			
Unsentenced	352	29	72	8	424	37	461			
Total	1250	93	239	17	1489	110	1599	100%		
Total 30 June 2016										
Sentenced	944	71	174	11	1118	82			1200	
Unsentenced	342	33	72	11	414	44			458	
Total	1286	104	246	22	1532	126			1658	100%

Sentenced – Includes prisoners detained in custody at the Administrator’s pleasure and persons in custody for fine default.

- There were 4% less prisoners in custody in Northern Territory correctional institutions on 30 June 2017 than for the same day last year.
- Males represented 93% of the prisoners on 30 June 2017.
- On 30 June 2017, 71% of prisoners were sentenced.
- The number of sentenced prisoners decreased by 5% whereas unsentenced prisoners increased by 1% compared to the previous year.

Figure 8 Northern Territory Adult Prisoners as at 30 June 2017

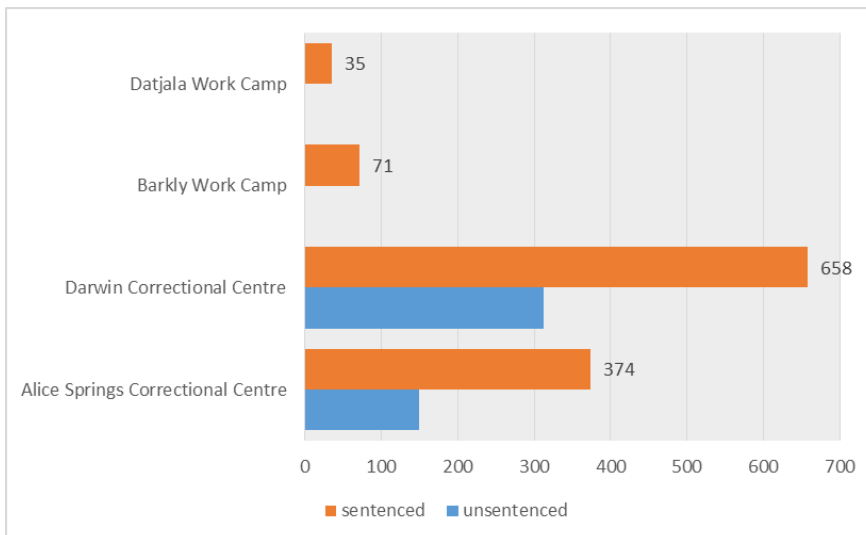


Table 5 Census of prisoners by correctional institution and employment status at time of reception.

Correctional institution	Employment Status				Total	
	Employed	Unemployed	Other	Not Stated	2017	2016
Alice Springs Correctional Centre	137	351	34	1	523	580
Darwin Correctional Centre	246	608	114	2	970	986
Barkly Work Camp	13	56	2	0	71	56
Datjala Work Camp	6	25	4	0	35	36
Total 30 June 2017	402	1040	154	3	1599	
Total 30 June 2016	411	1077	165	5		1658

Other – Includes students, pensioners and home duties.

- Aboriginal prisoners represented 84% of the total prison population on the nights of 30 June 2017 and 30 June 2016.
- On 30 June 2017, 65% of prisoners held in custody indicated that they were unemployed at time of reception.

Table 6 Census of prisoners by correctional institution and age.

Correctional institution	Age Group (years)							Total	
	<18	18-19	20-29	30-39	40-49	50-59	60+	2017	2016
Alice Springs Correctional Centre	0	27	164	183	107	34	8	523	580
Darwin Correctional Centre	0	29	339	302	187	95	18	970	986
Barkly Work Camp	0	1	24	30	15	1	0	71	56
Datjala Work Camp	0		11	15	8	1	0	35	36
Total 30 June 2017	0	57	538	530	317	131	26	1599	
Total 30 June 2016	0	48	583	544	339	118	26		1658

- On 30 June 2017, 26 prisoners aged 60 years or more were in custody, of who the eldest was 74 years old.
- On 30 June 2017, 67% of prisoners held in custody were between 20 and 39 years of age.

Table 7 Census of prisoners by correctional institution and marital status.

Correctional institution	Marital Status					Total	
	Never Married	Married	Separated Divorced	Widowed	Unknown	2017	2016
Alice Springs Correctional Centre	191	300	28	2	2	523	580
Darwin Correctional Centre	445	450	68	6	1	970	986
Barkly Work Camp	19	46	6	0	0	71	56
Datjala Work Camp	8	23	4	0	0	35	36
Total 30 June 2017	663	819	106	8	3	1599	
Total 30 June 2016	673	871	101	11	2		1658

- On 30 June 2017, 51% of prisoners held in custody stated at the time of their reception that they were married.

Table 8 Census of sentenced prisoners by correctional institution and aggregate sentence.

Correctional institution	Aggregate Sentence									Total		
	Months				Years			Indefinite		Number	Days	
	<1	1<3	3<6	6<12	1<2	2<5	5+	Other	Life		Mean	Median
Alice Springs Correctional Centre	8	24	77	79	56	70	48	2	10	374	810	335
Darwin Correctional Centre	9	23	77	81	68	179	169	18	34	658	1377	1072
Barkly Work Camp	0	2	23	20	15	11	0	0	0	71	390	244
Datjala Work Camp	0	1	1	11	13	6	3	0	0	35	758	456
Total 30 June 2017	17	50	178	191	152	266	220	20	44	1138	1101	547
Total 30 June 2016	30	72	157	196	200	265	223	17	40	1200	1065	547

Aggregate sentence – The longest period that the offender may be detained under sentence in the current episode.

Other – Includes prisoners detained at the Administrator's pleasure, indefinite sentences subject to Judicial Review and post detention orders.

Days (Mean, Median) – Does not include indeterminate sentences (Life, Administrator's Pleasure and indefinite sentence).

- There was a decrease of 5% in the number of sentenced prisoners held on 30 June 2017 compared with 30 June 2016.
- On 30 June 2017, 25% of the sentenced prisoners held in custody had an aggregate sentence of five years or longer (including indefinite sentences).
- There was a 43% decrease in the number of prisoners with an aggregate sentence of less than 1 month on 30 June 2017, compared with 30 June 2016. Note: In 2017, the methodology for the calculation of time ranges was updated to improve accuracy.
- Prisoners with an aggregate sentence of 12 months or less, comprised 38% of total sentenced prisoners.
- The median aggregate sentence of sentenced prisoners held at the Barkly Work Camp decreased by 43% from the same time last year.

Table 9 Census of prisoners by correctional institution, last known address and Aboriginal status.

Last Known Address	Alice Springs Correctional Centre		Darwin Correctional Centre		Barkly Work Camp		Datjala Work Camp		Total	
	Aboriginal	Non-Aboriginal	Aboriginal	Non-Aboriginal	Aboriginal	Non-Aboriginal	Aboriginal	Non-Aboriginal	2017	2016
Adelaide River	0	0	2	2	0	0	0	0	4	6
Ali Curung	21	0	4	0	3	0	1	0	29	24
Alice Springs	196	20	42	8	17	0	1	0	284	310
Alyangula	0	0	30	0	0	0	0	0	30	41
Avon Downs	2	0	0	0	0	0	0	0	2	1
Batchelor	0	0	3	3	0	0	0	0	6	9
Borroloola	0	0	17	0	0	0	0	0	17	22
Casuarina	1	2	69	54	0	0	3	1	130	137
Daly River	0	0	5	1	0	0	0	0	6	7
Darwin	3	4	60	38	0	0	4	0	109	96
Elliot	3	0	4	0	1	0	0	0	8	8
Harts Range	17	0	2	0	6	0	0	0	25	22
Hermannsburg	29	0	6	0	3	0	0	0	38	43
Humpty Doo	0	3	13	16	0	0	0	0	32	33
Jabiru	0	0	8	0	0	0	0	0	8	4
Kalkaringi	0	0	13	0	0	0	3	0	16	11
Katherine	1	0	80	9	0	0	4	0	94	106
Kintore	19	0	5	0	3	0	0	0	27	29
Kulgera	3	0	2	0	1	0	0	0	6	12
Lajamanu	3	0	10	0	1	0	0	0	14	14
Maningrida	2	0	35	0	0	0	2	0	39	37
Maranboy	0	0	26	0	0	0	0	0	26	25
Mataranka	0	0	9	1	0	0	0	0	10	9
Ngukurr	0	0	36	1	0	0	2	0	39	36
Nhulunbuy	0	1	20	2	0	0	1	0	24	39
Oenpelli	0	0	28	0	0	0	0	0	28	24
Palmerston	2	2	80	38	1	0	5	1	129	119
Papunya	23	0	6	0	7	0	1	0	37	46
Pine Creek	0	0	2	0	0	0	0	0	2	2
Pirlangimpi	0	0	4	0	0	0	0	0	4	6
Tennant Creek	57	2	15	0	16	0	0	0	90	103
Ti Tree	17	0	3	0	4	0	0	0	24	31
Timber Creek	1	0	11	0	0	0	0	0	12	8
Tiwi Islands	0	0	3	0	0	0	0	0	3	1
Wadeye	1	0	53	0	0	0	3	0	57	53
Wurrumiyanga	0	0	10	0	0	0	0	0	10	8
Yuendumu	44	0	4	0	4	0	1	0	53	52
Yulara	16	0	1	0	4	0	0	0	21	31
NT Unknown	0	0	0	1	0	0	0	0	1	1
Interstate	15	9	6	24	0	0	0	1	55	64
Overseas	0	0	0	3	0	0	0	0	3	7
No fixed abode	4	0	33	9	0	0	1	0	47	21
Total 2017	480	43	760	210	71	0	32	3	1599	
Total 2016	532	48	769	217	56	0	33	3		1658

Last known address – As recorded in IOMS and aggregated into Police districts.

- Alice Springs Police District was the most common last known address for prisoners held in custody on 30 June 2017, representing 18% (284) of prisoners in custody. This was followed by Casuarina Police District at 8% (130), Palmerston Police District at 8% (129), and Darwin Police District at 7% (109).

Table 10 Census of prisoners by offence and sentence status.

Most Serious Offence	Sentenced		Unsentenced		Total	
	2017	2016	2017	2016	2017	2016
Homicide and related offences						
Murder	45	41	5	14	50	55
Attempted Murder	3	3	6	4	9	7
Manslaughter and driving causing death	52	48	1	1	53	49
Acts intended to cause injury	473	519	280	253	753	772
Sexual assault and related offences	126	131	47	53	173	184
Dangerous or negligent acts endangering persons						
Driving under the influence of alcohol or drugs	1	0	1	0	2	0
Dangerous or negligent driving	13	13	4	8	17	21
Other	31	32	6	2	37	34
Abduction and related offences	6	2	4	5	10	7
Robbery extortion and related offences	30	30	15	9	45	39
Unlawful entry with intent	44	55	17	25	61	80
Theft and related offences						
Motor vehicle theft and related offences	14	4	3	3	17	7
Other	8	7	3	1	11	8
Deception and related offences	3	9	1	4	4	13
Illicit drug offences	59	57	51	52	110	109
Weapons and explosive offences	2	2	2	7	4	9
Property damage and environmental pollution	32	41	6	4	38	45
Public order offences	9	6	0	1	9	7
Road traffic and motor vehicle regulatory offences						
Driving licence offences	29	36	0	0	29	36
Exceeding the prescribed content of alcohol	20	26	3	5	23	31
Other	2	2	0	0	2	2
Offences against justice procedures, gov't security and operations						
Breach of justice order	126	130	5	7	131	137
Other	9	6	0	0	9	6
Miscellaneous offences	1	0	0	0	1	0
Other	0	0	1	0	1	0
Total 30 June 2017	1138		461		1599	
Total 30 June 2016		1200		458		1658

Most serious offence – As recorded in IOMS.

Sentenced – Includes prisoners detained at the Administrator's pleasure, indefinite sentences subject to Judicial Review, post detention orders and fine default.

- The most common offence type for people held in custody on 30 June 2017 was 'Acts intended to cause injury' which represented 47% of the total prisoner population. This was followed by 'Sexual assault and related offences' representing 11%.
- There was a 9% decrease in the number of sentenced people in custody for 'Acts intended to cause injury' ie. 473 on 30 June 2017 compared with 519 on 30 June 2016.

Table 11 Census of prisoners by correctional institution, Aboriginal status and type of sentence.

Correctional Institution	Unsentenced	Sentenced						Total	
		Fine Default	Fixed Term	Max-Min	Indefinite			2017	2016
					Parole	Other	Life		
Alice Springs Correctional Centre									
Aboriginal	131	1	167	176	2	2	1	480	532
Non-Aboriginal	18	0	3	15	6	0	1	43	48
Total	149	1	170	191	8	2	2	523	580
Darwin Correctional Centre									
Aboriginal	250	1	148	327	19	14	1	760	769
Non-Aboriginal	62	0	19	111	12	4	2	210	217
Total	312	1	167	438	31	18	3	970	986
Barkly Work Camp									
Aboriginal	0	0	45	26	0	0	0	71	56
Non-Aboriginal	0	0	0	0	0	0	0	0	0
Total	0	0	45	26	0	0	0	71	56
Datjala Work Camp									
Aboriginal	0	0	14	18	0	0	0	32	33
Non-Aboriginal	0	0	0	3	0	0	0	3	3
Total	0	0	14	21	0	0	0	35	36
Total 30 June 2017									
Aboriginal	381	2	374	547	21	16	2	1343	
Non-Aboriginal	80	0	22	129	18	4	3	256	
Total	461	2	396	676	39	20	5	1599	
Total 30 June 2016									
Aboriginal	375	1	401	580	19	13	1		1390
Non-Aboriginal	83	0	23	138	17	4	3		268
Total	458	1	424	718	36	17	4		1658

Fine default – Those prisoners who are serving a sentence for non-payment of a fine and are subject to no other sentence at the time. Offenders who are serving fine default sentences while on remand are counted as sentenced (fine default) prisoners.

Max-Min – Maximum term specified and minimum term or non-parole period set.

Fixed term – No post-release follow-up period set.

Indefinite - Other – Includes prisoners detained at the Administrator's pleasure, subject to Judicial Review and post detention.

Indefinite -Parole – Prisoners who have received a life sentence with a non-parole period set.

- Of those who were unsentenced, 83% were Aboriginal.
- Aboriginal prisoners comprised 94% of those with fixed term sentences and 81% of those with max-min sentences.
- There was a 7% decrease in the number of 'Fixed Term' sentences, ie 396 on 30 June 2017 compared to 424 on 30 June 2016.
- 'Max-Min' sentences represented the most common type of sentence.

ADULT PRISONER TURNOVER DURING 2016-17**Table 12 Adult turnover summary.**

		Aboriginal		Non-Aboriginal		Total
		Male	Female	Male	Female	2016-17
Held at 30 June 2016	Adult	1286	104	246	22	1658
Received during 2016-17	Adult	3168	481	513	73	4235
Youth to adult	Youth	7	0	1	0	8
Releases during 2016-17	Adult	3211	492	521	78	4302
Held at 30 June 2017	Adult	1250	93	239	17	1599

Youth to adult – Youths transferring to adult prisons while in custody.

Table 13 Adult escapes (incidents and persons).

	Financial Year	Alice Springs Correctional Centre	Darwin Correctional Centre	Barkly Work Camp ¹	Datjala Work Camp ²	Total
Incidents	2016-17	6	4	0	1	11
	2015-16	4	6	1	1	12
	2014-15	5	3	2	1	11
	2013-14	2	3	9	-	14
	2012-13	1	2	2	-	5
	2011-12	2	1	2	-	5
	2010-11	5	2	0	-	7
	2009-10	3	1	-	-	4
	2008-09	2	1	-	-	3
	2007-08	1	0	-	-	1
	2006-07	3	1	-	-	4
	2005-06	2	2	-	-	4
	2004-05	2	0	-	-	2
	2003-04	1	1	-	-	2
	2002-03	2	0	-	-	2
	2001-02	2	1	-	-	3
	2000-01	2	0	-	-	2
	1999-00	0	0	-	-	0
	1998-99	0	0	-	-	0
	1997-98	0	1	-	-	1
Persons	2016-17	8	4	0	3	15
	2015-16	5	11	1	1	18
	2014-15	5	3	2	2	12
	2013-14	2	4	18	-	24
	2012-13	1	2	6	-	9
	2011-12	2	2	2	-	6
	2010-11	7	2	0	-	9
	2009-10	3	1	-	-	4
	2008-09	2	2	-	-	4
	2007-08	1	0	-	-	1
	2006-07	4	1	-	-	5
	2005-06	2	5	-	-	7
	2004-05	2	0	-	-	2
	2003-04	1	1	-	-	2
	2002-03	2	0	-	-	2
	2001-02	2	1	-	-	3
	2000-01	2	0	-	-	2
	1999-00	0	0	-	-	0
	1998-99	0	0	-	-	0
	1997-98	0	1	-	-	1

Escapes include incidents that occur under escort and from hospital.

Note: 1. The Barkly Work Camp commenced operation in April 2011.

2. Escape data for the Datjala Work Camp was not recorded until after 1 July 2014 when the Camp located to a permanent site in Nhulunbuy. Prior to 1 July 2014, any escapes from the Datjala Work Camp were included in Darwin Correctional Centre figures.

Table 14 Adult receptions by sentence status, Aboriginal status and sex.

Correctional Centre	Sentenced				Unsentenced				Total	
	Aboriginal		Non-Aboriginal		Aboriginal		Non-Aboriginal		2016-17	2015-16
	Female	Male	Female	Male	Female	Male	Female	Male		
Alice Springs Correctional Centre	150	1101	0	46	91	382	10	78	1858	1908
Darwin Correctional Centre	116	988	21	190	124	697	42	199	2377	2365
Total 2016-17	266	2089	21	236	215	1079	52	277	4235	
Total 2015-16	252	2128	25	252	214	1081	47	274		4273

Sentenced – If any portion of an episode is sentenced as at the reporting date, then it is classified as a sentenced reception.

- The number of overall receptions in 2016-17 38 fewer than in the previous year (less than a 1% decrease).
- Darwin Correctional Centre continued to be the most frequent centre for adult receptions, accounting for 56% of receptions in 2016-17.
- There was a 6% increase in the number of receptions of sentenced Aboriginal females in 2016-17 compared to the previous year.

ADULT PRISONERS DURING 2016-17

Table 15 Adult monthly daily average by correctional institution and sentence status.

	Darwin Correctional Centre		Alice Springs Correctional Centre		Barkly Work Camp		Datjala Work Camp		All		Total	
	Sentenced	Unsentenced	Sentenced	Unsentenced	Sentenced	Unsentenced	Sentenced	Unsentenced	Sentenced	Unsentenced	2016-17	2015-16
July	666	312	409	155	66	0	34	0	1176	467	1643	1595
August	646	300	394	167	73	0	37	0	1149	467	1616	1595
September	647	279	401	158	69	0	37	0	1154	437	1591	1579
October	650	289	403	164	68	0	39	0	1160	453	1613	1591
November	655	290	404	166	69	0	35	0	1163	456	1618	1649
December	688	290	388	147	71	0	31	0	1178	437	1615	1694
January	688	320	373	173	65	0	32	0	1158	493	1651	1723
February	684	331	369	188	71	0	31	0	1155	519	1675	1751
March	704	321	383	188	72	0	33	0	1191	509	1700	1725
April	702	327	400	164	73	0	33	0	1207	491	1699	1703
May	686	305	383	163	71	0	34	0	1174	468	1642	1684
June	664	306	377	156	68	0	37	0	1146	461	1607	1675
<i>Aboriginal 2016-17</i>	<i>523</i>	<i>240</i>	<i>361</i>	<i>151</i>	<i>69</i>	<i>0</i>	<i>32</i>	<i>0</i>	<i>985</i>	<i>391</i>	<i>1376</i>	<i>1396</i>
Total 2016-17	673	306	390	166	70	0	35	0	1168	471	1639	
Total 2015-16	650	311	425	178	60	0	39	0	1174	489		1663

Note:

The figures represent the averages rounded to the nearest integer.

- There was a 1% decrease in the yearly daily average compared to the previous year.
- The yearly daily average number of sentenced prisoners decreased by 1% and unsentenced prisoners decreased by 4%.
- Aboriginal prisoners represented 84% of the daily average.

Figure 9 Adult Monthly Daily Averages 2016-17 and 2015-16.

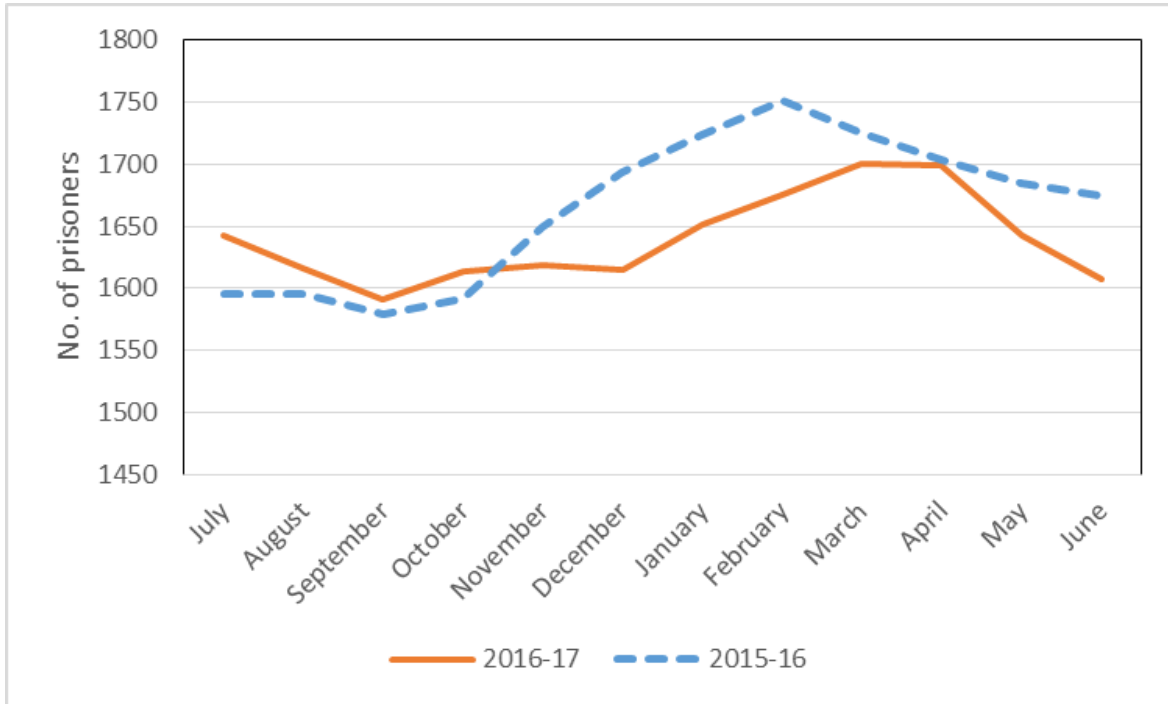


Figure 10 Monthly daily average of sentenced and unsentenced adults, 2016-17

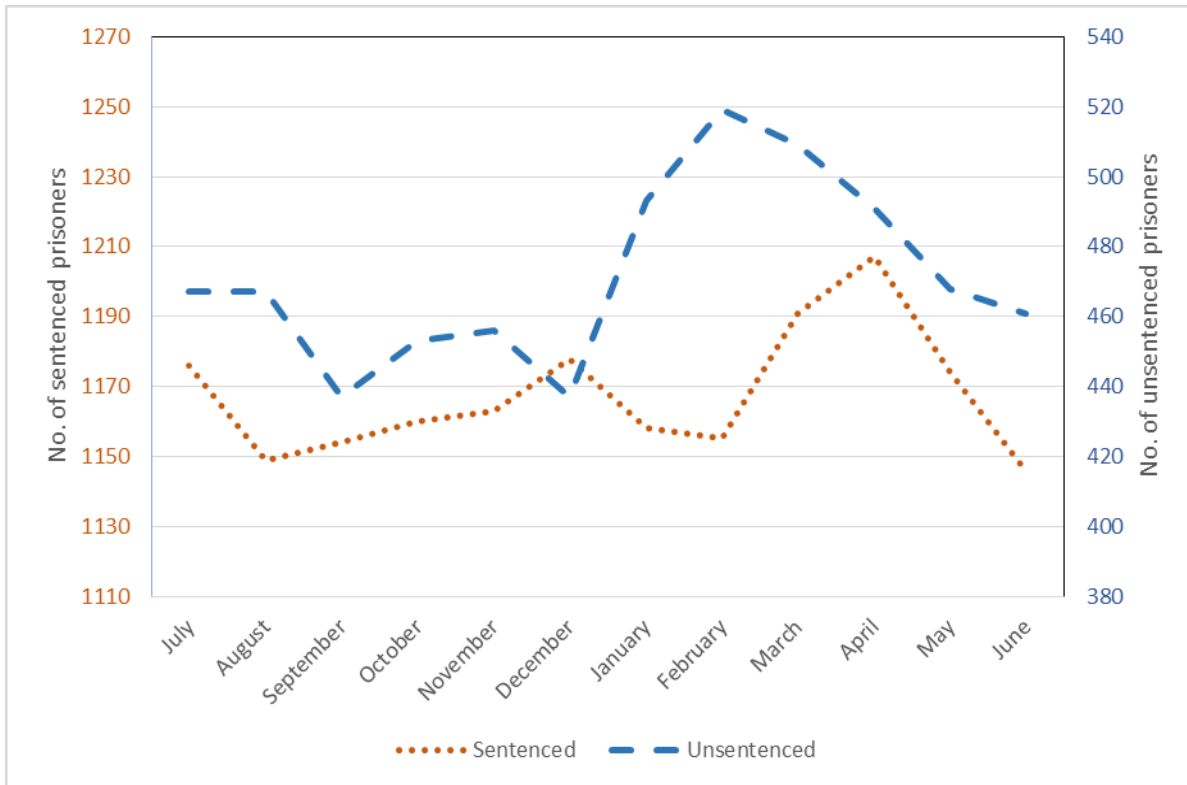


Table 16 Adult releases by correctional institution, release reason and Aboriginal status.

Release Reason	Alice Springs Correctional Centre		Darwin Correctional Centre		Barkly Work Camp		Datjala Work Camp		All Prisons		Total	
	Aboriginal	Non-Aboriginal	Aboriginal	Non-Aboriginal	Aboriginal	Non-Aboriginal	Aboriginal	Non-Aboriginal	Aboriginal	Non-Aboriginal	2016-17	2015-16
Appeal Upheld	1	0	0	0	0	0	0	0	1	0	1	5
Death	1	0	2	0	0	0	0	0	3	0	3	4
Deportation	0	1	0	1	0	0	0	0	0	2	2	4
Expiry Of Sentence (Full Term)	834	27	698	96	96	1	28	0	1656	124	1780	1826
Extradition	13	3	1	10	0	0	0	0	14	13	27	25
Home Detention	0	1	1	6	0	0	0	0	1	7	8	9
Interstate Transfer	1	0	0	2	0	0	0	0	1	2	3	2
Other Discharge From Custody	316	35	628	168	2	0	0	0	946	203	1149	1240
Parole	34	2	49	23	3	0	1	1	87	26	113	132
Supervised Bond	412	61	548	154	9	1	4	1	973	217	1190	879
Under Appeal	1	0	0	0	0	0	0	0	1	0	1	4
Unknown - Discharge From Custody	5	3	9	0	0	0	0	0	14	3	17	69
Unknown – Transfer To Community Supervision	3	1	3	1	0	0	0	0	6	2	8	0
Total 2016-17	1621	134	1939	461	110	2	33	2	3703	599	4302	
Total 2015-16	1539	149	1933	428	123	1	24	2	3619	580		4199
Prison Total 2016-17	1755		2400		112		35		4302			
Prison Total 2015-16	1688		2361		124		26		4199			

Other Discharge From Custody – These are predominantly prisoners released from court, ie bailed or released following finalisation of charges. Also includes releases on non-supervised bonds and community work orders.

- The total number of prisoners released increased by 2% compared with the previous year.
- Prisoners released for ‘expiry of sentence (full term)’ decreased by 3% compared with the previous year.
- Prisoners released to ‘supervised bond’ increased by 35% compared with the previous year.

Table 17 Distinct adults received by correctional institution, age, sex and Aboriginal status.

Age Group	Sex	Alice Springs Correctional Centre		Darwin Correctional Centre		Total	
		Aboriginal	Non-Aboriginal	Aboriginal	Non-Aboriginal	2016-17	2015-16
16 to 17 years	All	0	0	0	0	0	1
	Male	0	0	0	0	0	0
18 to 19 years	All	71	4	80	9	164	192
	Male	67	4	71	6	148	172
20 to 24 years	All	216	6	246	39	507	565
	Male	186	5	225	33	449	509
25 to 29 years	All	259	22	317	73	671	692
	Male	218	20	273	62	573	606
30 to 34 years	All	242	23	246	70	581	593
	Male	192	21	212	62	487	506
35 to 39 years	All	201	13	201	53	468	446
	Male	170	13	173	47	403	379
40 to 44 years	All	149	14	156	46	365	348
	Male	130	14	136	36	316	290
45 to 49 years	All	105	8	104	32	249	265
	Male	87	6	90	28	211	224
50 to 59 years	All	75	12	79	34	200	189
	Male	67	9	67	30	173	163
60 years and older	All	10	7	8	16	41	36
	Male	9	7	8	16	40	32
Average age	All	33	37	33	36	33	33
Total 2016-17	All	1328	109	1437	372	3246	
	Male	1126	99	1255	320	2800	
	Female	202	10	182	52	446	
Total 2015-16	All	1401	115	1445	366		3327
	Male	1187	105	1278	311		2881
	Female	214	10	167	55		446

Note: The age group and correctional institution is for the first reception for a distinct person. Youths aged 15 to 17 years can be accommodated in adult correctional institutions.

- The average age of distinct Aboriginal adults received into custody in 2016-17 was 33 years and for distinct non-Aboriginal adults it was 36 years.
- The average age of distinct non-Aboriginal adults held in Alice Springs Correctional Centre increased from 34 in 2015-16 to 37 in 2016-17.
- During 2016-17, there were 41 distinct persons aged 60 years or older received into custody, which represented 1% of distinct persons received. The eldest person received was 80 years of age.

Table 18 Distinct adults received by correctional institution, place of origin and Aboriginal status.

Place of Origin	Alice Springs Correctional Centre		Darwin Correctional Centre		2016-17			2015-16
	Aboriginal	Non- Aboriginal	Aboriginal	Non- Aboriginal	Aboriginal	Non- Aboriginal	Total	Total
Australia								
Ali Curung	43	0	4	0	47	0	47	51
Alice Springs	703	14	38	3	741	17	758	823
Alyangula	0	0	36	0	36	0	36	52
Borrooloola	3	0	4	0	7	0	7	9
Darwin/Palmerston	12	3	452	62	464	65	529	521
Elliot	3	0	4	0	7	0	7	10
Haarts Range	25	0	0	0	25	0	25	35
Hermannsburg	26	0	2	0	28	0	28	36
Jabiru	0	0	6	0	6	0	6	1
Kalkaringi	1	0	20	0	21	0	21	19
Katherine	6	1	196	2	202	3	205	187
Kintore	5	0	0	0	5	0	5	6
Kulgera	5	0	0	0	5	0	5	6
Lajamanu	2	0	12	0	14	0	14	32
Maningrida	0	0	19	0	19	0	19	23
Maranboy	0	0	18	0	18	0	18	18
Mataranka	0	0	5	0	5	0	5	5
Ngukurr	0	0	18	0	18	0	18	19
Nhulunbuy	0	0	88	0	88	0	88	108
Oenpelli	0	0	12	0	12	0	12	14
Papunya	52	0	1	0	53	0	53	57
Tennant Creek	68	1	19	1	87	2	89	80
Ti Tree	43	0	4	0	47	0	47	49
Timber Creek	0	0	14	0	14	0	14	11
Wadeye	0	0	39	0	39	0	39	30
Wurrumiyanga	0	0	15	0	15	0	15	22
Yuendumu	47	0	3	0	50	0	50	51
Yulara	6	0	0	0	6	0	6	5
NT Other	198	7	272	22	470	29	499	433
Interstate	71	60	95	174	166	234	400	421
Unknown	9	1	39	14	48	15	63	74
Total Australian	1328	87	1435	278	2763	365	3128	3228
Overseas								
Africa	0	3	0	13	0	16	16	9
Indonesia	0	0	0	5	0	5	5	2
Philippines	0	0	0	6	0	6	6	6
Vietnam	0	0	0	14	0	14	14	2
Other Asia	0	0	0	13	0	13	13	23
New Zealand	0	8	0	18	0	26	26	18
Other Oceania	0	3	0	9	0	12	12	14
United Kingdom	0	5	0	11	0	16	16	11
Other Europe	0	2	0	5	0	7	7	13
USA	0	1	0	2	0	3	3	1
Total Overseas	0	22	0	96	0	118	118	99
Total 2016-17	1328	109	1435	374	2763	483	3246	
2015-16	1400	116	1443	368	2843	484		3327

Place of origin – Self reported location of origin, as recorded in IJIS and aggregated into Police Districts.

Note: The correctional institution is for the first reception for a distinct person.

- Interstate prisoners decreased by 5% or 21 distinct prisoners from the previous year. They comprised 12% (400) of distinct prisoners received into an adult correctional centre during the year and 48% of total distinct non-Aboriginal prisoners.
- The number of prisoners from overseas locations increased by 19% or 19 distinct prisoners from the previous year.

Table 19 Summary of adult sentenced episode commencements by aggregate sentence and offence, 2016-17

Most Serious Offence		Aggregate Length										2016-17 Total	2015-16		
		Months				Years			Days				Total	Mean	
		0-<1	1-<3	3-<6	6-<12	1-<2	2-<5	5-<10	10 +	Life*	mean				median
Homicide and related offences															
Murder	All	-	-	-	-	-	-	-	-	4	na	na	4	2	na
Attempted murder	All	-	-	-	-	-	-	-	1	1	6024	6024	2	0	-
Manslaughter and driving causing death	All	-	-	-	-	-	2	6	2	-	2727	2555	10	7	3242
Acts intended to cause injury															
	All	28	190	402	294	104	68	5	2	2	273	178	1095	1178	267
Sexual assault and related offences															
Dangerous or negligent acts endangering persons															
Driving under the influence of alcohol	All	-	2	5	2	1	-	-	-	-	189	150	10	4	192
Dangerous or negligent driving	All	-	7	8	7	3	6	-	-	-	350	183	31	37	427
Other Dangerous Acts	All	-	3	7	11	7	9	1	-	-	517	359	38	46	574
Abduction, harassment and other offences against the person															
	All	-	-	-	1	1	2	-	-	-	801	843	4	5	198
Robbery, extortion and related offences															
	All	-	-	-	-	6	8	3	-	-	1285	1180	17	25	1436
Unlawful entry with intent, burglary, break and enter															
	All	8	21	47	27	21	8	1	-	-	296	180	133	159	276
Theft and related offences															
Illegal use of motor vehicle	All	1	11	12	4	2	4	-	-	-	263	134	34	21	117
Theft other	All	12	14	7	2	2	3	-	-	-	198	88	40	41	205
Fraud, deception and related offences															
	All	1	3	2	-	1	-	-	-	-	131	90	7	13	519
Illicit drug offences															
	All	9	16	10	13	13	27	8	-	-	677	365	96	107	674
Prohibited and regulated weapons and explosive offences															
	All	2	9	6	-	-	-	-	-	-	87	58	17	23	108
Property damage and environmental pollution															
	All	15	10	6	8	1	4	1	-	1	215	90	46	73	295
Public order offences															
	All	7	9	2	4	-	1	-	-	-	123	60	23	13	188
Traffic and vehicle regulatory offences															
Driving licence offences	All	11	38	24	6	-	-	-	-	-	91	88	79	81	99
Exceeding the prescribed content of alcohol	All	10	50	65	22	-	-	-	-	-	122	120	147	137	128
Offences against justice procedures, gov't security and gov't operations															
Breach of justice order	All	369	168	65	59	24	10	1	-	2	88	29	698	549	84
Justice other	All	4	4	4	-	2	-	-	-	-	157	91	14	9	425
Miscellaneous offences															
	All	2	8	2	-	-	-	-	-	-	56	59	12	0	-
Total	All	479	563	675	460	198	164	37	7	11	262	122	2594	2572	284

* includes indefinite sentences

Note: 'life' sentences not included in total mean and median calculations.

Aggregate sentence – Is determined as the period between the most recent full-time discharge date (as at 30 June 2017) and the date of reception for the episode.

Most serious offence – As recorded from information derived from IOMS and IJIS.

- There were 2,594 sentenced episode commencements of 2,163 distinct persons during 2016-17, which is almost 1% more than in 2015-16. This includes 265 people who were on remand on 30 June 2016 who became sentenced within the same episode during the following 12 months.
- These sentenced episode commencements relate to 2,163 distinct persons.
- 'Acts intended to cause injury' was the most common offence type for sentences commencing in 2016-17 comprising 42% of the commencements. This was followed by 'Offences against justice procedures, government security and government operations' (27%) and 'Traffic and vehicle regulatory offences' (9%).
- 'Murder' and 'Attempted murder' overall received the longest aggregate sentences of life and more than 16 years, respectively. They were followed by 'Manslaughter and driving causing death' and 'Sexual assault and related offences' which had average aggregate sentences of 7.5 years and 4.7 years respectively which experienced a reduction (16% and 6% respectively) for both of these offence groups compared with 2015-16.
- Four people commenced a life sentence for murder during 2016-17.
- 66% of the sentenced episode commencements had an aggregate sentence of less than 6 months. The average aggregate sentence for sentenced episode commencements was 262 days, which is 22 days less than for the previous year.

Table 20 Adult sentenced episode commencements by aggregate sentence, Aboriginal status and offence, 2016-17

Most Serious Offence		Aggregate Length											2016-17		2015-16	
		Months				Years				Days			Total	Total	Mean	
		0<1	1<3	3<6	6<12	1<2	2<5	5<10	10+	Life*	mean	median				
Homicide and related offences																
Murder	Non Aboriginal	-	-	-	-	-	-	-	-	2	na	na	2	0	-	
	Aboriginal	-	-	-	-	-	-	-	-	2	na	na	2	2	na	
Attempted murder	Non Aboriginal	-	-	-	-	-	-	-	1	-	6024	6024	1	0	-	
	Aboriginal	-	-	-	-	-	-	-	1	-	na	na	1	0	-	
Manslaughter and driving causing death	Non Aboriginal	-	-	-	-	-	-	1	-	2020	2020	1	0	-		
	Aboriginal	-	-	-	-	2	5	2	-	2805	2920	9	7	3242		
Acts intended to cause injury																
	Non Aboriginal	1	9	9	6	3	9	-	1	-	528	196	38	64	353	
	Aboriginal	27	181	393	288	101	59	5	1	2	264	177	1057	###	263	
Sexual assault and related offences																
	Non Aboriginal	-	-	-	-	2	3	3	1	-	2011	1816	9	16	1732	
	Aboriginal	-	-	1	-	8	9	8	1	1	1604	1185	28	26	1857	
Dangerous or negligent acts endangering persons																
Driving under the influence of alcohol or drugs	Non Aboriginal	-	1	-	1	-	-	-	-	-	189	213	2	0	-	
	Aboriginal	-	1	5	1	1	-	-	-	-	184	150	8	4	192	
Dangerous or negligent driving	Non Aboriginal	-	-	-	-	-	-	-	-	-	-	-	0	5	865	
	Aboriginal	-	7	8	7	3	6	-	-	-	350	183	31	32	359	
Other Dangerous Acts	Non Aboriginal	-	-	2	1	1	1	-	-	-	470	207	5	11	798	
	Aboriginal	-	3	5	10	6	8	1	-	-	525	364	33	35	504	
Abduction, harassment and other offences against the person																
	Non Aboriginal	-	-	-	1	-	1	-	-	-	760	760	2	1	488	
	Aboriginal	-	-	-	-	1	1	-	-	-	843	843	2	4	125	
Robbery, extortion and related offences																
	Non Aboriginal	-	-	-	-	1	2	-	-	-	1093	1094	3	7	1380	
	Aboriginal	-	-	-	-	5	6	3	-	-	1326	1182	14	18	1458	
Unlawful entry with intent, burglary, break and enter																
	Non Aboriginal	-	-	1	1	2	1	-	-	-	547	455	5	6	435	
	Aboriginal	8	21	46	26	19	7	1	-	-	286	180	128	153	270	
Theft and related offences																
Illegal use of motor vehicle	Non Aboriginal	-	1	-	1	-	2	-	-	-	535	580	4	4	155	
	Aboriginal	1	10	12	3	2	2	-	-	-	227	128	30	17	108	
Theft other	Non Aboriginal	-	-	1	1	2	3	-	-	-	794	729	7	10	426	
	Aboriginal	12	14	6	1	-	-	-	-	-	72	61	33	31	134	
Fraud, deception and related offences																
	Non Aboriginal	1	3	2	-	-	-	-	-	-	72	76	6	10	623	
	Aboriginal	-	-	-	-	1	-	-	-	-	487	487	1	3	173	
Illicit drug offences																
	Non Aboriginal	5	8	4	7	11	20	6	-	-	795	548	61	65	866	
	Aboriginal	4	8	6	6	2	7	2	-	-	470	180	35	42	375	
Prohibited and regulated weapons and explosive offences																
	Non Aboriginal	-	-	-	-	-	-	-	-	-	-	-	0	0	-	
	Aboriginal	2	9	6	-	-	-	-	-	-	87	58	17	23	108	
Property damage and environmental pollution																
	Non Aboriginal	-	-	-	1	-	1	-	-	-	575	575	2	5	893	
	Aboriginal	15	10	6	7	1	3	1	-	1	198	89	44	68	251	
Public order offences																
	Non Aboriginal	1	-	-	1	-	1	-	-	-	453	272	3	4	451	
	Aboriginal	6	9	2	3	-	-	-	-	-	73	56	20	9	72	
Traffic and vehicle regulatory offences																
Driving licence offences	Non Aboriginal	-	2	-	-	-	-	-	-	-	53	53	2	4	55	
	Aboriginal	11	36	24	6	-	-	-	-	-	92	89	77	77	102	
Exceeding the prescribed content of alcohol	Non Aboriginal	2	7	-	-	-	-	-	-	-	57	60	9	4	62	
	Aboriginal	8	43	65	22	-	-	-	-	-	126	121	138	133	131	
Offences against justice procedures, gov't security and gov't operations																
Breach of justice order	Non Aboriginal	40	25	7	6	6	2	-	-	1	101	30	87	48	126	
	Aboriginal	329	143	58	53	18	8	1	-	1	86	29	611	501	80	
Justice other	Non Aboriginal	-	2	1	-	1	-	-	-	-	192	92	4	3	419	
	Aboriginal	4	2	3	-	1	-	-	-	-	143	91	10	3	435	
Miscellaneous offences																
	Non Aboriginal	1	7	2	-	-	-	-	-	-	61	59	10	0	-	
	Aboriginal	1	1	-	-	-	-	-	-	-	29	29	2	0	-	
Total		Non Aboriginal	51	65	29	27	29	46	10	3	3	486	123	263	270	590
		Aboriginal	428	498	646	433	169	118	27	4	8	237	122	2331	###	248

* includes indefinite sentences

Note: 'life' sentences not included in total mean and median calculations.

- Aboriginal people represented 90% of the sentenced episode commencements. The average aggregate sentence length for Aboriginal prisoners was 237 days, 249 days less than that for Non-Aboriginal prisoners.

Table 21 Adult sentenced episodes held by aggregate sentence, offence and Aboriginal status, 2016-17

Most Serious Offence		Aggregate Length											2016-17		2015-16	
		Months				Years				Days		Total	Total	Mean		
		0<1	1<3	3<6	6<12	1<2	2<5	5<10	10 +	Life*	mean				median	
Homicide and related offences																
Murder	All	-	-	-	-	-	-	-	-	45	na	na	45	44	na	
	Aboriginal	-	-	-	-	-	-	-	-	23	na	na	23	21	na	
Attempted murder	All	-	-	-	-	-	-	-	1	4	6024	6024	5	3	na	
	Aboriginal	-	-	-	-	-	-	-	4	na	na	4	3	na		
Manslaughter and driving causing death	All	-	-	-	-	-	7	23	28	1	3501	3468	59	55	3611	
	Aboriginal	-	-	-	-	-	7	22	25	1	3507	3287	55	52	3639	
Acts intended to cause injury																
	All	31	224	509	396	220	197	33	6	5	397	193	1621	1659	397	
	Aboriginal	30	214	493	384	213	178	25	3	5	371	188	1545	1561	374	
Sexual assault and related offences																
	All	-	-	1	-	14	36	73	34	6	2552	2297	164	161	2582	
	Aboriginal	-	-	1	-	11	25	58	28	5	2623	2460	128	122	2688	
Dangerous or negligent acts endangering persons																
Driving under the influence of alcohol or drugs	All	-	2	5	2	1	-	-	-	-	189	150	10	5	196	
	Aboriginal	-	1	5	1	1	-	-	-	-	184	150	8	5	196	
Dangerous or negligent driving	All	-	7	9	8	4	12	2	1	-	625	272	43	51	487	
	Aboriginal	-	7	9	8	4	11	1	-	-	494	208	40	43	402	
Other Dangerous Acts	All	-	3	7	17	19	21	5	1	-	767	548	73	71	737	
	Aboriginal	-	3	5	16	17	17	4	1	-	756	547	63	57	690	
Abduction, harassment and other offences against the person																
	All	-	-	-	1	1	3	-	-	-	933	1231	5	9	339	
	Aboriginal	-	-	-	-	1	2	-	-	-	1048	1231	3	8	320	
Robbery, extortion and related offences																
	All	-	-	1	-	10	25	11	5	-	1664	1501	52	50	1435	
	Aboriginal	-	-	-	-	8	18	10	3	-	1658	1461	39	37	1331	
Unlawful entry with intent, burglary, break and enter																
	All	8	26	66	45	42	21	2	1	-	367	183	211	215	333	
	Aboriginal	8	26	64	43	38	17	2	1	-	352	183	199	202	325	
Theft and related offences																
Illegal use of motor vehicle	All	1	11	12	4	2	4	-	-	-	263	134	34	28	123	
	Aboriginal	1	10	12	3	2	2	-	-	-	227	128	30	22	116	
Theft other	All	12	15	8	3	4	4	2	-	-	304	89	48	48	290	
	Aboriginal	12	15	7	1	1	1	1	-	-	151	82	38	35	157	
Fraud, deception and related offences																
	All	1	3	3	-	2	7	-	1	-	856	487	17	22	611	
	Aboriginal	-	-	-	-	1	1	-	1	-	1947	1152	3	6	198	
Illicit drug offences																
	All	9	17	11	16	17	55	18	5	2	1034	731	150	149	911	
	Aboriginal	4	9	6	7	5	13	3	-	-	614	274	47	49	379	
Prohibited and regulated weapons and explosive offences																
	All	2	9	6	1	-	-	-	-	-	99	59	18	27	116	
	Aboriginal	2	9	6	1	-	-	-	-	-	99	59	18	27	116	
Property damage and environmental pollution																
	All	15	10	7	10	2	16	4	-	1	495	180	65	96	391	
	Aboriginal	15	10	7	9	2	11	4	-	1	446	122	59	88	353	
Public order offences																
	All	7	9	3	5	-	3	-	-	-	226	90	27	17	334	
	Aboriginal	6	9	3	4	-	-	-	-	-	84	66	22	11	172	
Traffic and vehicle regulatory offences																
Driving licence offences	All	13	42	30	13	-	-	-	-	-	102	90	98	95	107	
	Aboriginal	12	40	30	13	-	-	-	-	-	104	91	95	91	109	
Exceeding the prescribed content of alcohol	All	12	52	83	35	2	-	-	-	-	134	122	184	176	138	
	Aboriginal	10	45	83	35	2	-	-	-	-	138	122	175	171	140	
Offences against justice procedures, gov't security and gov't operations																
Breach of justice order	All	389	186	80	88	56	25	3	-	4	132	30	831	686	146	
	Aboriginal	348	159	73	79	47	23	2	-	2	132	30	733	625	141	
Justice other	All	4	5	4	-	4	3	-	-	-	340	119	20	11	609	
	Aboriginal	4	3	3	-	3	1	-	-	-	273	103	14	3	435	
Miscellaneous offences																
	All	2	8	2	-	-	-	-	-	-	56	59	12	1	181	
	Aboriginal	1	1	-	-	-	-	-	-	-	29	29	2	1	181	
Total		506	629	847	644	400	439	176	83	68	507	180	3792	3679	507	
		453	561	807	604	356	327	132	62	41	455	169	3343	3240	453	

* includes indefinite sentences

Note: 'life' sentences not included in mean and median calculations.

- There were 3,792 sentenced episodes in 2016-17 which commenced a sentenced status prior to or during 2016-17; 88% of these episodes related to Aboriginal prisoners.
- The average aggregate sentence for those held during 2016-17 was 507 days and the median was 180 days.
- During 2016-17, there were 68 episodes in which the aggregate sentence for the prisoner was either a life or indefinite sentence; **murder** was the most serious offence for 45 of these episodes.

Table 22 Adult sentenced episodes commenced by aggregate sentence, offence and gender, 2016-17

Most Serious Offence		Aggregate Length											2016-17 Total	2015-16			
		Months				Years				Days				Total	Mean		
		0<1	1<3	3<6	6<12	1<2	2<5	5<10	10 +	Life*	mean	median					
Homicide and related offences																	
Murder	All	-	-	-	-	-	-	-	-	4	na	na	4	2	na		
	Female	-	-	-	-	-	-	-	-	-	-	-	0	1	na		
Attempted murder	All	-	-	-	-	-	-	-	1	1	6024	6024	2	0	-		
	Female	-	-	-	-	-	-	-	-	-	-	-	0	0	-		
Manslaughter and driving causing death	All	-	-	-	-	-	2	6	2	-	2727	2555	10	7	3242		
	Female	-	-	-	-	-	-	-	-	-	3103	3103	2	1	2555		
Acts intended to cause injury	All	28	190	402	294	104	68	5	2	2	273	178	1095	1178	267		
	Female	9	24	31	22	9	3	-	-	-	208	153	98	99	260		
Sexual assault and related offences	All	-	-	1	-	10	12	11	2	1	1706	1368	37	42	1810		
	Female	-	-	-	-	-	-	-	-	-	-	-	0	0	-		
Dangerous or negligent acts endangering persons																	
Driving under the influence of alcohol or drugs	All	-	2	5	2	1	-	-	-	-	189	150	10	4	192		
	Female	-	1	-	-	1	-	-	-	-	264	264	2	0	-		
Dangerous or negligent driving	All	-	7	8	7	3	6	-	-	-	350	183	31	37	427		
	Female	-	1	1	-	-	-	-	-	-	91	91	2	5	265		
Other Dangerous Acts	All	-	3	7	11	7	9	1	-	-	517	359	38	46	574		
	Female	-	-	2	4	-	-	-	-	-	243	227	6	3	806		
Abduction, harassment and other offences against the person	All	-	-	-	1	1	2	-	-	-	801	843	4	5	198		
	Female	-	-	-	-	-	-	-	-	-	-	-	0	0	-		
Robbery, extortion and related offences	All	-	-	-	-	6	8	3	-	-	1285	1180	17	25	1436		
	Female	-	-	-	-	-	1	-	-	-	1102	1102	1	1	60		
Unlawful entry with intent, burglary, break and enter	All	8	21	47	27	21	8	1	-	-	296	180	133	159	276		
	Female	-	1	3	2	2	-	-	-	-	220	121	8	10	229		
Theft and related offences																	
Illegal use of motor vehicle	All	1	11	12	4	2	4	-	-	-	263	134	34	21	117		
	Female	-	3	1	-	-	-	-	-	-	84	89	4	0	-		
Theft other	All	12	14	7	2	2	3	-	-	-	198	88	40	41	205		
	Female	4	1	-	-	-	1	-	-	-	307	24	6	6	385		
Fraud, deception and related offences	All	1	3	2	-	1	-	-	-	-	131	90	7	13	519		
	Female	-	2	-	-	-	-	-	-	-	76	76	2	7	655		
Illicit drug offences	All	9	16	10	13	13	27	8	-	-	677	365	96	107	674		
	Female	-	2	3	1	3	2	2	-	-	826	524	13	17	586		
Prohibited and regulated weapons and explosive offences	All	2	9	6	-	-	-	-	-	-	87	58	17	23	108		
	Female	-	2	-	-	-	-	-	-	-	64	64	2	3	96		
Property damage and environmental pollution	All	15	10	6	8	1	4	1	-	1	215	90	46	73	295		
	Female	3	1	-	1	-	1	-	-	-	200	53	6	11	137		
Public order offences	All	7	9	2	4	-	1	-	-	-	123	60	23	13	188		
	Female	-	1	-	1	-	-	-	-	-	137	137	2	0	-		
Traffic and vehicle regulatory offences																	
Driving licence offences	All	11	38	24	6	-	-	-	-	-	91	88	79	81	99		
	Female	4	7	1	3	-	-	-	-	-	97	89	15	12	94		
Exceeding the prescribed content of alcohol	All	10	50	65	22	-	-	-	-	-	122	120	147	137	128		
	Female	1	8	10	2	-	-	-	-	-	122	119	21	21	152		
Offences against justice procedures, gov't security and gov't operations																	
Breach of justice order	All	369	168	65	59	24	10	1	-	2	88	29	698	549	84		
	Female	43	17	10	6	4	3	-	-	-	104	33	83	66	89		
Justice other	All	4	4	4	-	2	-	-	-	-	157	91	14	9	425		
	Female	-	-	-	-	-	-	-	-	-	-	-	0	0	-		
Miscellaneous offences	All	2	8	2	-	-	-	-	-	-	56	59	12	0	-		
	Female	-	-	-	-	-	-	-	-	-	-	-	0	0	-		
Total	All	479	563	675	460	198	164	37	7	11	262	122	2594	2572	284		
	Female	64	71	62	42	19	11	4	0	0	216	120	273	263	241		

* includes indefinite sentences

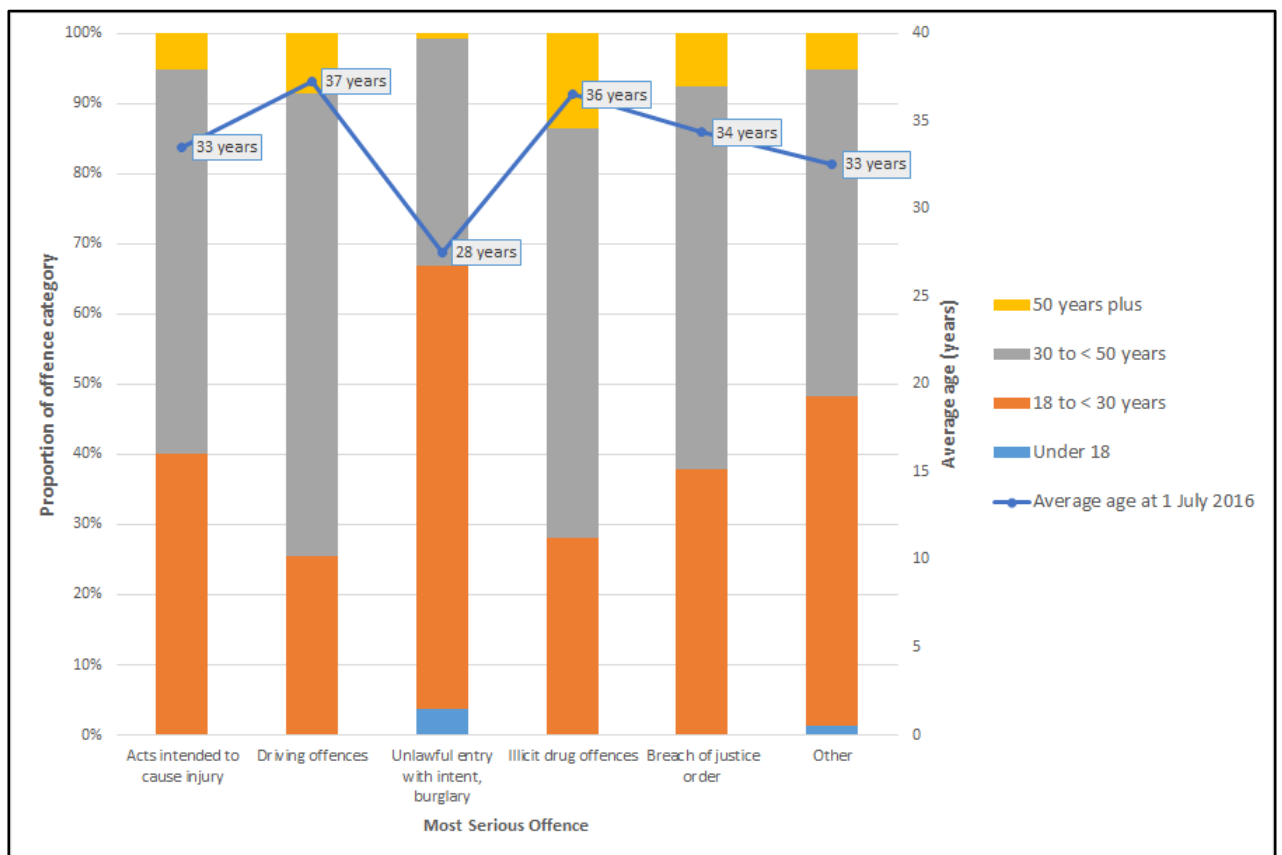
Note: 'life' sentences not included in total mean and median calculations.

Aggregate sentence – Is determined as the period between the most recent full-time discharge date (as at 30 June 2017) and the date of reception for the episode.

Most serious offence – As recorded from information derived from IOMS and IJIS.

- In 2016-17, there were 273 sentence commencements for adult females, 4% more than the previous year. Adult female commencements represented 11% of all sentence commencements for all adults during this period.
- The average aggregate sentence length for females was 216 days which is 46 days less than the average for all adults.
- 'Acts intended to cause injury' was the most common offence for females who commenced a sentence in 2016-17 (36% of commencements), followed by 'Offences against justice procedures, government security and government operations' (30%) and 'Traffic and vehicle regulatory offences' (13%).

Figure 11 Distribution of aggregate sentence commencements for adults according to selected offences and age* group, 2016-17



*Ages are calculated as at 1 July 2016, hence some individuals were less than 18 years (ie. less than the age of an adult).

COMMUNITY CORRECTIONS CASELOAD AS AT 30 JUNE 2017

Table 23 Community Corrections adult caseload by office, Aboriginal status and order.

Office		Program									Total	
		Parole	Probation	Home Detention	Bail Supervision	Community Based Order	Community Custody Order	Community Work Order	Final/Interim Supervision Order	Mental Impairment Order	2017	2016
Alice Springs	All	29	186	3	27	0	17	30	0	1	293	221
	Aboriginal	27	148	1	15	0	17	27	0	1	236	178
Casuarina	All	7	121	1	7	1	0	15	0	2	154	121
	Aboriginal	4	56	1	6	0	0	7	0	1	75	59
Groote Eylandt	All	5	32	0	0	0	0	3	0	1	41	61
	Aboriginal	5	31	0	0	0	0	3	0	1	40	61
Katherine	All	6	163	1	16	0	16	40	0	0	242	183
	Aboriginal	6	149	1	15	0	16	38	0	0	225	164
Nhulunbuy	All	2	38	1	2	0	0	11	0	0	54	76
	Aboriginal	1	33	0	2	0	0	11	0	0	47	72
Palmerston	All	31	148	6	20	0	1	16	1	0	223	237
	Aboriginal	13	82	1	5	0	1	15	1	0	118	137
Tennant Creek	All	5	74	0	7	0	3	13	0	0	102	79
	Aboriginal	5	71	0	5	0	3	12	0	0	96	72
Wadeye	All	0	34	1	2	0	0	5	0	0	42	39
	Aboriginal	0	34	1	2	0	0	5	0	0	42	39
Total 30 June 2017	All	85	796	13	81	1	37	133	1	4	1151	
	Aboriginal	61	604	5	50	0	37	118	1	3	879	
Total 30 June 2016	All	98	699	13	42	0	20	141	0	4		1017
	Aboriginal	63	542	6	28	0	20	120	0	3		782

Note:

Adult status is based on age at commencement of order.

Figures are distinct by order thus the total figure does not represent distinct clients, as a client may have different orders active simultaneously.

Active/draft orders counted only, i.e. no orders in breach included.

Please note that figures for 2016 have been amended to include bail supervision orders.

- There was a 13% increase in the adult caseload as at 30 June 2017 compared with the same time the previous year.
- Aboriginal persons represented 76% of the adult caseload as at 30 June 2017.
- There was a 33% increase in orders for the Alice Springs office and a 32% increase in orders for the Katherine office.
- Bail supervision orders increased by 93% while community custody orders increased by 85% compared with the same time the previous year.

Table 24 Community Corrections youth caseload by office, Aboriginal status and order.

Office		Program					Total	
		Parole	Probation	Community Work Order	Youth Alternative Home Detention Order	Bail Supervision	2017	2016
Alice Springs	All	0	31	11	0	8	50	52
	Aboriginal	0	31	11	0	7	49	51
Casuarina	All	0	14	2	1	3	20	20
	Aboriginal	0	11	2	1	3	17	13
Groote Eylandt	All	0	4	2	0	2	8	12
	Aboriginal	0	4	2	0	2	8	12
Katherine	All	0	8	2	0	5	15	15
	Aboriginal	0	8	2	0	5	15	15
Nhulunbuy	All	0	3	1	0	1	5	3
	Aboriginal	0	3	1	0	1	5	3
Palmerston	All	1	17	5	1	3	27	30
	Aboriginal	1	16	5	1	3	26	29
Tennant Creek	All	0	6	2	0	1	9	8
	Aboriginal	0	6	2	0	1	9	8
Wadeye	All	0	2	0	0	0	2	4
	Aboriginal	0	2	0	0	0	2	4
Total 30 June 2017	All	1	85	25	2	23	136	
	Aboriginal	1	81	25	2	22	131	
Total 30 June 2016	All	1	89	47	1	6		144
	Aboriginal	1	86	42	1	5		135

Note:

Youth status is based on age at commencement of order.

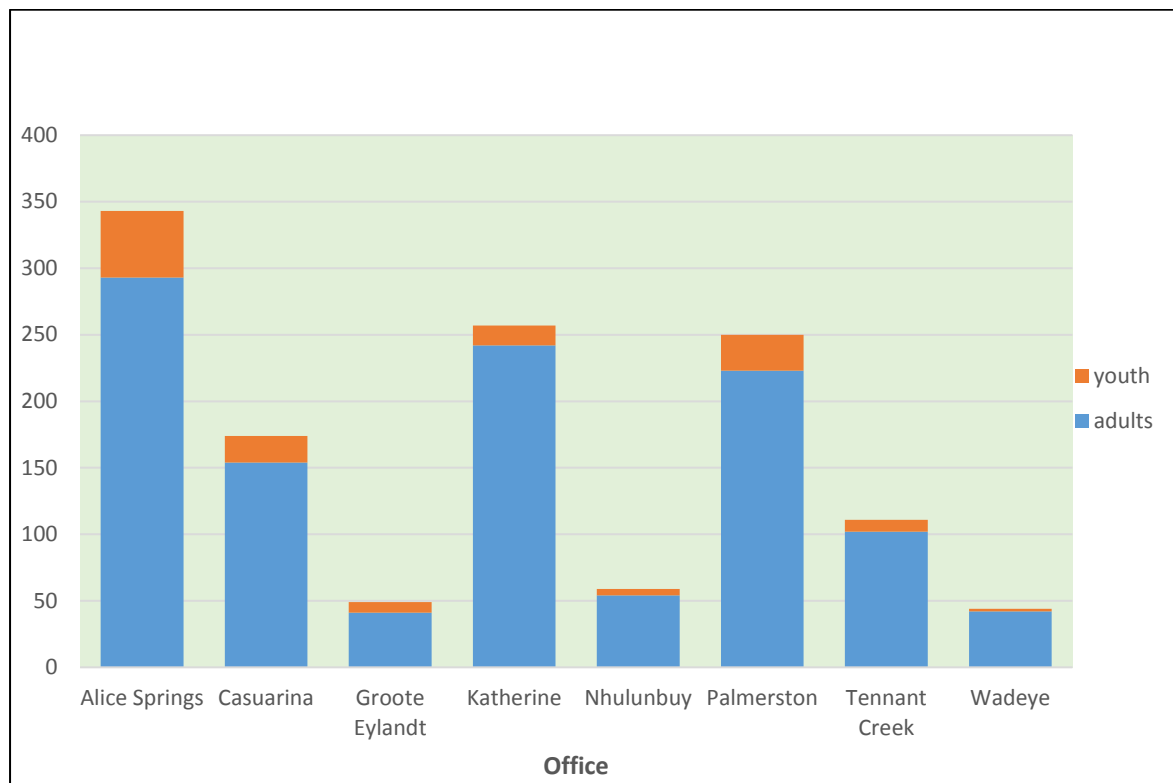
Figures are distinct by order thus the total figure does not represent distinct clients, as a client may have different orders active simultaneously.

Active/draft orders counted only ie no orders in breach included.

Please note that figures for 2016 have been amended to include bail supervision orders.

- There was a 6% decrease in the youth caseload as at 30 June 2017 compared with the same time the previous year.
- Aboriginal persons represented 96% of the youth caseload as at 30 June 2017.
- Youth Probation orders represented the most common type of order.
- There was a 33% decrease in orders for the Groote Eylandt office.
- Compared with the previous year, community work orders decreased by 47% and bail supervision increased by 283%.

Figure 12 Northern Territory Community Corrections Caseload as at 30 June 2017.



COMMUNITY CORRECTIONS TURNOVER DURING 2016-17

Table 25 Community corrections order completions.

Order	Completions			Total	Success Rate	
	Successful	Unsuccessful	Other		2016-17	2015-16
Community work orders						
Adult	252	85	1	338	75%	74%
Youth	65	43	1	109	60%	56%
Home detention/Youth alternative detention						
Adult	20	2	0	22	91%	86%
Youth	4	6	0	10	40%	43%
Parole						
Adult	55	49	7	111	53%	57%
Youth	1	1	0	2	50%	75%
Probation						
Adult	569	222	12	803	72%	75%
Youth	70	44	1	115	61%	47%
Community custody order						
Adult	63	26	0	89	71%	77%
Community based order						
Adult	2	0	0	2	100%	50%
Total 2016-17	1101	478	22	1601	70%	
Adult	961	384	20	1365	71%	
Youth	140	94	2	236	60%	
Total 2015-16	1098	478	33	1609		70%

Other – Includes interstate transfers, withdrawal of order and deaths.

Success rate – Is expressed as a proportion of successful and unsuccessful completions only.

na – not applicable

- The success rate for the completion of youth probation increased noticeably from 47% to 61%.

Table 26 Community corrections order commencements by Aboriginal status and gender.

Order	Aboriginal		Non-Aboriginal		All		Total	
	Female	Male	Female	Male	Female	Male	2016-17	2015-16
Community work order								
Adult	64	236	13	42	77	278	355	393
Youth	19	69	1	1	20	70	90	117
Home detention/Youth alternative detention								
Adult	4	5	4	10	8	15	23	28
Youth	1	6	0	2	1	8	9	6
Parole								
Adult	14	74	2	24	16	98	114	132
Youth		1			0	1	1	2
Probation								
Adult	156	698	25	153	181	851	1032	950
Youth	33	115	1	6	34	121	155	166
Community custody order								
Adult	24	72	2	5	26	77	103	79
Community based order								
Adult	0	2	1	0	1	2	3	0
Final supervision order								
Adult	0	1	0	0	0	1	1	1
Total 2016-17	315	1279	49	243	364	1522	1886	
Adult	262	1088	47	234	309	1322	1631	
Youth	53	191	2	9	55	200	255	
Total 2015-16	282	1294	56	242	338	1536		1874

- There was a 1% increase in the number of community corrections commencements in 2016-17 compared with the previous year.
- The number of adults commencing parole decreased by 14% in 2016-17 compared with 2015-16, whilst the number of commencements of community custody orders increased by 30%.

Table 27 Distinct persons commencing a community corrections order by Aboriginal status and gender.

	Aboriginal		Non-Aboriginal		All		Total	
	Female	Male	Female	Male	Female	Male	2016-17	2015-16
Distinct Adults	246	1023	44	228	290	1251	1541	1479
Distinct Youths	29	133	2	7	31	140	171	191
Distinct Persons 2016-17	275	1153	46	235	321	1388	1709	
Distinct Persons 2015-16	256	1139	49	224	305	1363		1668

Note: The sum of distinct adults and youths may differ to the total distinct persons, as a person could appear as both an adult and youth in the same year.

- There was a 2% increase in the number of distinct persons commencing a community corrections order in 2016-17 compared with the previous year.
- Females represented 19% of the distinct persons who commenced a community corrections order in 2016-17.

APPENDIX 1

OFFENCE CLASSIFICATIONS

The offences used in this report are based on the Australian and New Zealand Standard Offence Classification. Offences are grouped into Division and Subdivision level and are as follows:

Offences Against the person

Homicide and related offences

Murder
Attempted murder
Manslaughter and driving causing death

Acts intended to cause injury

Assault
Other acts intended to cause injury

Sexual assault and related offences

Sexual assault
Non-assaultive sexual offences

Dangerous or negligent acts endangering persons

Dangerous or negligent operations of a vehicle
Other dangerous or negligent acts endangering persons

Abduction, harassment and other offences against the person

Abduction and kidnapping
Deprivation of liberty/False imprisonment
Harassment and threatening behaviour

Robbery, extortion and related offences

Robbery
Blackmail and extortion

Property Offences

Unlawful entry with intent/Burglary, break and enter

Unlawful entry with intent/Burglary, break and enter

Theft and related offences

Motor vehicle theft and related offences
Theft (except motor vehicles)
Receive or handle proceeds of crime
Illegal use of property (except motor vehicles)

Fraud, deception and related offences

Obtain benefit by deception
Forgery and counterfeiting
Deceptive business/government practices
Other fraud and deception offences

Property damage and environmental pollution

Property damage
Environmental pollution

Other Offences

Illicit drug offences

Import or export illicit drugs
Deal or traffic in illicit drugs
Manufacture or cultivate illicit drugs
Possess and/or use illicit drugs
Other illicit drug offences

Prohibited and regulated weapons and explosive offences

Prohibited weapons/Explosives offences
Regulated weapons/Explosives offences

Public order offences

Disorderly conduct
Regulated public order offences
Offensive conduct

Traffic and vehicle regulatory offences

Driver licence offences
Vehicle registration and roadworthiness offences
Regulatory driving offences (eg Exceeding the prescribed content of alcohol, Exceed legal speed limit)
Pedestrian offences

Offences against justice procedures, government security and government operations

Breach of custodial order offences
Breach of community-based orders
Breach of violence and non-violence orders
Offences against government operations
Offences against government security
Other offences against justice procedures

Miscellaneous offences

Defamation, libel and privacy offences
Public health and safety offences
Commercial/industry/financial regulation
Other miscellaneous offences